



*National Single Source Manufacturer
For All Drywall Finishing Accessories*

PRODUCT CATALOG

METAL BEADS & TRIMS

VINYL BEADS & TRIMS

PAPER FACED BEADS & TRIMS

METAL CHANNELS & FRAMING ACCESSORIES

FIRE RATED ASSEMBLIES

STUCCO, VENEER & PLASTER BEADS & TRIMS

METAL LATH

ROOFING METALS & SIDING ACCESSORIES

*Our Customers Are **Priority Number One!***

PHILLIPSMFG.COM
800.822.5055



- About Us -

Phillips Manufacturing Co. is a national single source manufacturer for all drywall finishing accessories including beads, trims, channels and framing components, lath and stucco accessories, roofing metals and siding accessories. We stand above the competition as specialists in beads, trims and accessories focusing on continual quality improvements and innovations providing the highest quality products. We are a privately owned and operated company proudly serving the entire nation with our extensive product lines through our many distribution channels.

- Our Mission -

"Lead the industry in delivering innovative products and services that add value to our customers and build their long-term success."

- Our Guarantee -

Phillips stands behind our product quality 100%. Our material and fabrication standards are the highest in the industry. Phillips products are manufactured by an organization devoted to customer satisfaction.



Headquarters and Plant / Omaha, Nebraska

THE PHILLIPS ADVANTAGE

- » **Innovation and Quality:** Phillips engineering, research and development, and production teams are driven towards value added products and services.
- » **Product Value:** Phillips delivers innovative products with distinct features and benefits at competitive prices for a strong competitive advantage.
- » **Service:** Phillips employs highly qualified and knowledgeable sales and sales support teams to ensure excellent customer service. We provide efficient national distribution with manufacturing and operating space of nearly 500,000 square feet. Customer-satisfaction survey results rated Phillips above the competition as a very strong supplier by current customers, excelling in understanding your needs, timely responses, resolving complaints and accessibility of service representatives.
- » **Relationships:** We understand the importance of the customer and recognize that success is achieved through partnerships and loyalty.
- » **Brand Loyalty:** Our national presence and well-recognized Phillips brand names are known throughout the industry.



CORPORATE OFFICE & PLANT

4949 S. 30th Street
Omaha, NE 68107

TAMPA PLANT

8419 Sabal Industrial Blvd.
Tampa, FL 33619

PHOENIX WAREHOUSE

111 E. Maricopa Fwy.
Phoenix, AZ 85004

SACRAMENTO WAREHOUSE

1020 Striker Ave., STE 160
Sacramento, CA 95834

NILES PLANT

504 Walnut Street
Niles, OH 44446

UMATILLA PLANT

38051 Florida 19
Umatilla, FL 32784

METRO ATLANTA WAREHOUSE

800 Cassville White Rd.
Cartersville, GA 30121

CONTACT:

PHILLIPSMFG.COM
800.822.5055



- Maintaining Excellence -

Phillips products are manufactured by the most highly developed processes available, using in-house expertise as our most valuable resource.

Our experienced technicians and engineers are engaged in continuous analysis of our manufacturing and quality control processes to ensure maximum quality standards. The feedback received from our customers is of immeasurable value in this on-going effort.

Customer service is an important reason why customers call on us time and time again to meet the needs of their construction project. We respond quickly and effectively to our customers' requests, regardless of the nature.





-QUICK REFERENCE-

LEED® Certification

Phillips Manufacturing Co. understands the importance of recycling and manufactures all of its products utilizing materials with recycled content. Phillips Manufacturing's products contain a minimum of **30% total recycled content** (25% post-consumer and 5% pre-consumer).

To request a project specific LEED® letter, please visit our website at PHILLIPSmfg.com

» **ADDITIONAL
INFORMATION
AVAILABLE AT:**

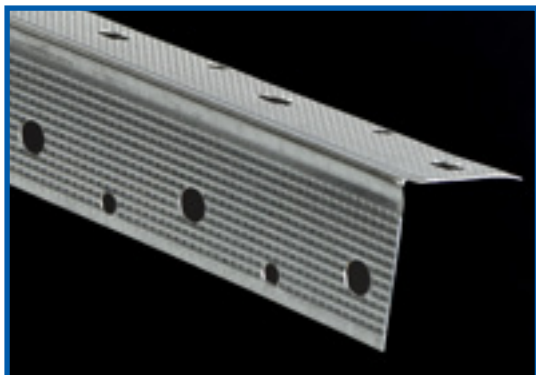
PHILLIPSmfg.com

Table of Contents

- Metal Beads & Trims 6**
 - Metal Corner Beads..... 6
 - Metal Trims and Finishing Products 11
- Vinyl Beads & Trims 12**
 - Vinyl Corner Beads..... 12
 - Bullnose Corner and Transition Caps 17
 - Vinyl Trims and Finishing Products..... 19
- Paper Faced Beads & Trims 21**
 - Paper Faced Corner Beads..... 21
 - Paper Faced Trims..... 27
- Metal Channels & Framing Accessories 29**
 - Channels..... 29
 - Flat Strap or Flat Stock..... 32
- Fire Rated Assemblies 33**
 - Shaftwall/Stairwell 33
 - Area Separation Wall 33
- Stucco, Veneer & Plaster Beads & Trims 34**
 - Stucco and Plaster Casing Beads..... 34
 - Stucco and Plaster Control Joints..... 35
 - Veneer Beads and Trims 36
 - Stucco Screeds and Exterior Finishing Products 37
- Metal Lath..... 38**
- Roofing Metals & Siding Accessories 40**
- Index 46**

METAL CORNER BEADS

PHILLIPS UNMATCHED SELECTION OF CORNER BEAD



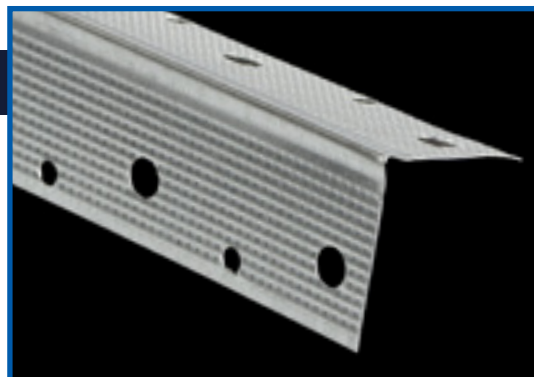
PART NUMBER: CBRHDG

Everlast® CORNER BEAD

Phillips performance proven Everlast® corner bead features a hot-dipped galvanized steel surface coating providing excellent rust protection. Phillips corner beads are easily installed using standard industry practice with drywall nails, staples, screws or clinching tool. Phillips corner beads also feature deeply knurled mud anchors to further ensure perfect mud adhesion.

klinchSTIK®

Phillips is the exclusive producer of klinchSTIK® metal bead. This corner bead features a grey galvanized surface coating and deeply knurled mud anchors for perfect mud adhesion. Phillips corner beads are easily installed using standard industry practice with drywall nails, staples, screws or clinching tool. Phillips klinchSTIK® is the ideal product for quick and easy installation with a clinching tool.



PART NUMBER: CBKEGB



PART NUMBER: CBRSF

ShadowFree® CORNER BEAD

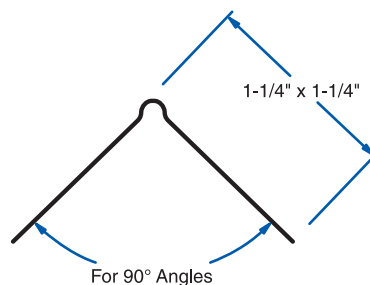
Phillips ShadowFree® corner bead is the perfect color and texture for a superior finish. This product features a hot-dipped galvanized steel surface coating with a primer top coating for excellent corrosion prevention and to ensure quality mud and paint adhesion. Phillips exclusive ShadowFree® surface coating helps prevent shadowing and cuts down on finishing time.

SIZES AND PACKAGING

Corner Bead

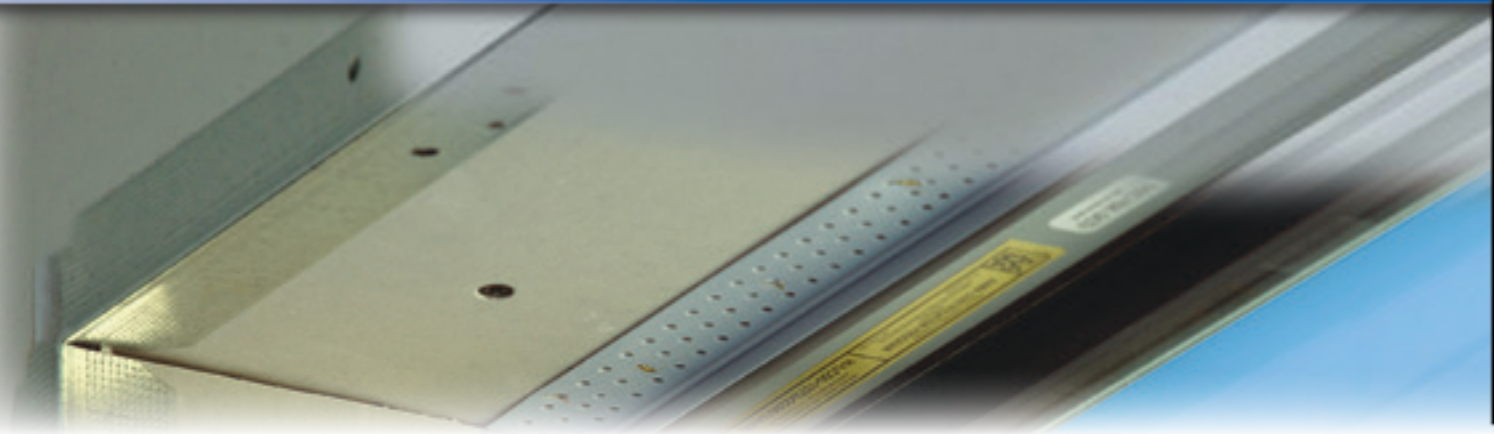
Length	Pieces Per Carton	Cartons Per Pallet	Feet Per Carton
7'	72	48	504
8'	63	48	504
9'	56	48	504
10'	50	48	500
12'	42	48	504

UPC labeling available upon request



For 90° Angles

Drawing not to scale



PART NUMBER: CBSEGB

klinchSTIK® SPLAY CORNER BEAD

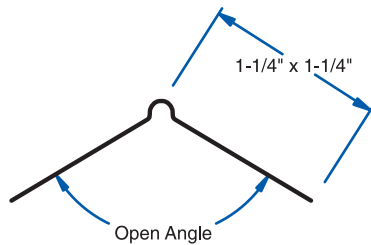
Phillips klinchSTIK® splay corner bead creates a time-saving, smooth, consistent finish for open angles exceeding 120°. klinchSTIK® splay features a grey galvanized surface coating which provides excellent rust protection. Install using standard industry practice with nails, staples, screws or clinching tool and finish with joint compound for a high-quality professional finish. Like all Phillips corner beads, this bead features deeply knurled mud anchors to further ensure perfect mud adhesion.

ShadowFree® SPLAY

Phillips ShadowFree® splay corner bead is the perfect color and texture for a superior finish on open angles exceeding 120°. This product is primed over a hot-dipped galvanized steel surface coating for excellent corrosion prevention and to ensure quality mud and paint adhesion. Phillips exclusive ShadowFree® surface coating helps prevent shadowing and cuts down on finishing time.



PART NUMBER: CBSSF



Drawing not to scale

SIZES AND PACKAGING

Splay Corner Bead

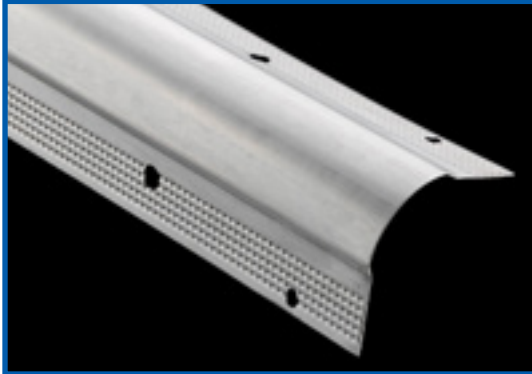
Length	Pieces Per Carton	Cartons Per Pallet	Feet Per Carton
8'	63	48	504
9'	56	48	504
10'	50	48	500

UPC labeling available upon request

Phillips Metal Beads & Trims work great with our extensive line of Corner & Transition Caps. See pages 17-18 for more details.



BULLNOSE METAL CORNER BEADS



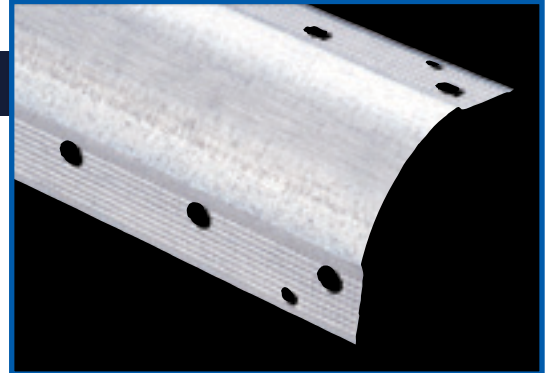
PART NUMBER: BN3EGB

3/4" klinchSTIK® BULLNOSE

Phillips performance proven klinchSTIK® 3/4" bullnose corner bead is used for a smooth, rounded finish on exposed edges of wallboard. Bullnose corner beads are a great way to finish off a room elegantly. This product provides superior corrosion protection and mud adhesion. This corner bead features a grey galvanized surface coating which provides the finest rust protection. Flanges feature deeply knurled mud anchors to further ensure perfect mud adhesion. Phillips corner beads are easily installed using standard industry practice with drywall nails, staples, screws or clinching tool.

1-1/2" klinchSTIK® BULLNOSE

Phillips performance proven klinchSTIK® 1-1/2" bullnose corner bead provides a more pronounced round corner creating a modern look at exposed edges of wallboard. This product also provides superior corrosion protection and mud adhesion. Phillips klinchSTIK® products feature a grey galvanized surface coating which provides the finest rust protection. Easily install using standard industry practice with drywall nails, staples, screws or clinching tool. The flanges of Phillips bullnose corner beads feature deeply knurled mud anchors to further ensure perfect mud adhesion.



PART NUMBER: BN5EGB



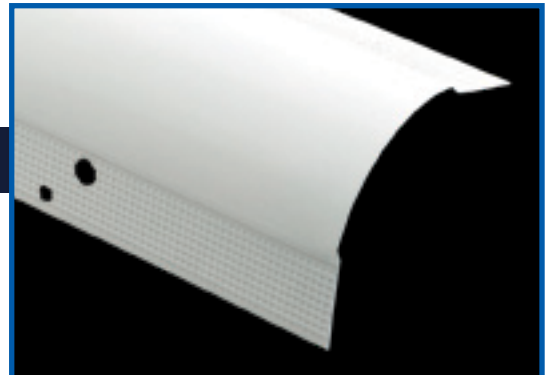
PART NUMBER: BN3SF

3/4" ShadowFree® BULLNOSE

Phillips ShadowFree® bullnose is the perfect color and texture for a superior finish. This product features a hot-dipped galvanized steel surface coating with a primer top coating for excellent corrosion prevention and to ensure quality mud and paint adhesion. Phillips exclusive ShadowFree® surface coating helps prevent shadowing and cuts down on finishing time.

1-1/2" ShadowFree® BULLNOSE

Expand your market with the perfect color and texture for a superior finish. This product is primed over a hot-dipped galvanized steel surface coating for excellent corrosion prevention and to ensure quality mud and paint adhesion. Phillips exclusive ShadowFree® surface coating prevents shadowing and cuts down on finishing time. Phillips 1-1/2" bullnose corner beads provide a more pronounced round corner creating a modern look.



PART NUMBER: BN5SF

SIZES AND PACKAGING

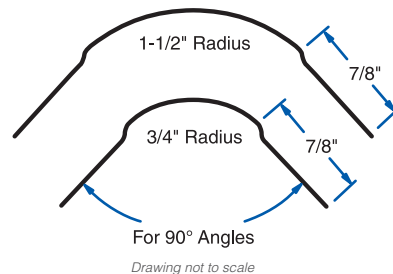
3/4" Bullnose

Length	Pieces Per Carton	Cartons Per Pallet	Feet Per Carton
7'	58	49	406
8'	50	64	400
9'	45	63	405
10'	40	60	400
12'	33	40	396

1-1/2" Bullnose

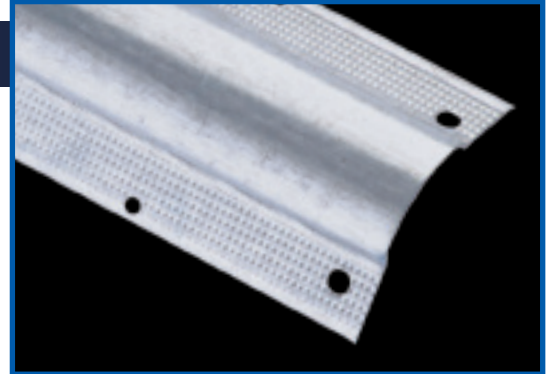
10'	20	40	200
-----	----	----	-----

UPC labeling available upon request

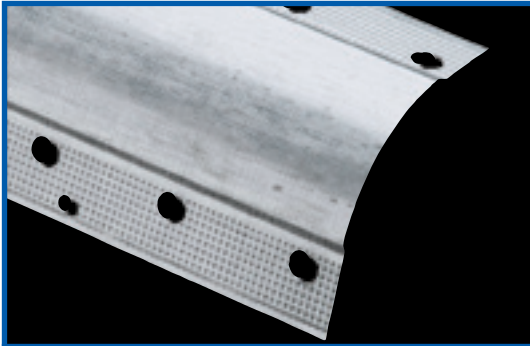


3/4" klinchSTIK® BULLNOSE SPLAY

Phillips performance proven klinchSTIK® 3/4" bullnose splay corner bead is used for a smooth, rounded finish on angles exceeding 120°. Bullnose splay corner beads are a great way to finish off a room elegantly. Phillips klinchSTIK® products feature a grey galvanized surface coating which provides the finest rust protection. Easily install using standard industry practice with drywall nails, staples, screws or clinching tool. The flanges of Phillips bullnose corner beads feature deeply knurled mud anchors to further ensure perfect mud adhesion.



PART NUMBER: BS3EGB



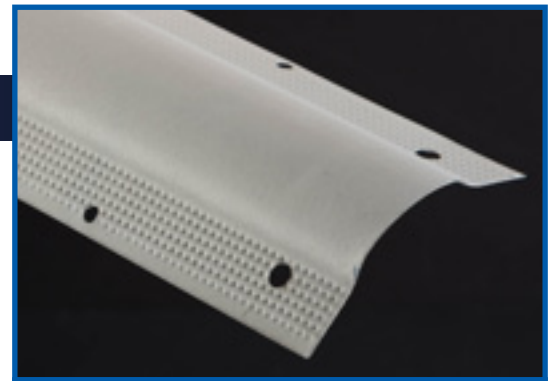
PART NUMBER: BS5EGB

1-1/2" klinchSTIK® BULLNOSE SPLAY

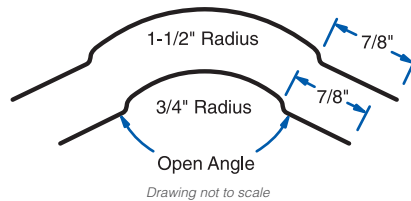
Phillips performance proven klinchSTIK® 1-1/2" bullnose splay corner bead provides a more pronounced round corner creating a modern look on angles exceeding 120° with its larger bullnose radius. This product also provides superior corrosion protection and mud adhesion. This corner bead features a grey galvanized surface coating which provides the finest rust protection. Easily install using standard industry practice with drywall nails, staples, screws or clinching tool. The flanges of Phillips bullnose corner beads feature deeply knurled mud anchors to further ensure perfect mud adhesion.

3/4" ShadowFree® BULLNOSE SPLAY

Phillips 3/4" ShadowFree® bullnose splay corner bead is the perfect color and texture for a superior finish on angles exceeding 120°. This product is primed over a hot-dipped galvanized steel surface coating for excellent corrosion prevention and to ensure quality mud and paint adhesion. Phillips exclusive ShadowFree® surface coating prevents shadowing and cuts down on finishing time.



PART NUMBER: BS3SF



SIZES AND PACKAGING

3/4" Bullnose Splay

Length	Pieces Per Carton	Cartons Per Pallet	Feet Per Carton
7'	58	40	406
8'	50	40	400
9'	45	40	405
10'	40	40	400
12'	33	40	396

1-1/2" Bullnose Splay

10'	20	40	200
-----	----	----	-----

UPC labeling available upon request

Phillips Metal Beads & Trims work great with our extensive line of Corner & Transition Caps. See pages 17-18 for more details.



BULLNOSE METAL CORNER BEADS



3/4" Bullnose Kerf

PART NUMBER: BK7EGB

3/4" & 1-1/2" BULLNOSE KERF

Phillips Bullnose Kerf metal has a unique shortened back flange allowing for insertion into grooved door jambs and window frames. This product is always a great fit and provides the smooth, round appearance associated with bullnose trims. This easy-to-install product is considered by many an excellent alternative to Bullnose J-Round. Bullnose Kerf is available in both 3/4" (BK7EGB) radius and 1-1/2" (BK5EGB) radius. The 1-1/2" provides an even rounder appearance adding a modern look to rooms. Phillips offers Bullnose Kerf metals with galvanized and ShadowFree® surface coatings (BK3SF, BK5SF); ask your sales representative for more information.



1-1/2" Bullnose Kerf

PART NUMBER: BK5EGB

SIZES AND PACKAGING

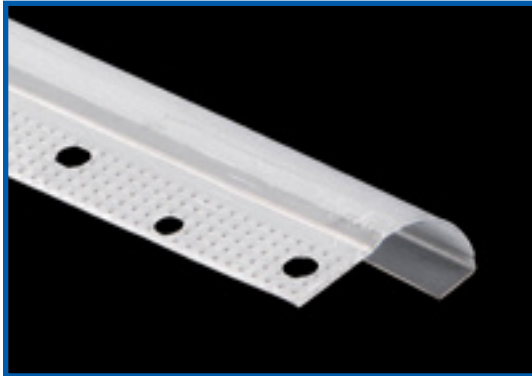
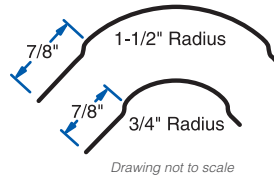
3/4" Bullnose Kerf Metal

Length	Pieces Per Carton	Cartons Per Pallet	Feet Per Carton
7'	58	40	406
8'	50	40	400
9'	45	40	405
10'	40	40	400

1-1/2" Bullnose Kerf Metal

Length	Pieces Per Carton	Cartons Per Pallet	Feet Per Carton
7'	28	40	196
8'	24	40	192
9'	22	40	198
10'	20	40	200

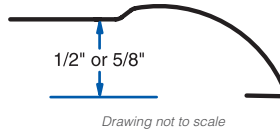
UPC labeling available upon request



PART NUMBER: SEE TEXT

BULLNOSE J-ROUND

Phillips Bullnose J-Round is an easily installed corner bead ideal for providing a rounded edge around door and window jambs. This product is perfect to use with non-kerfed door jambs. The Bullnose J-Round has a shortened back flange that comes in handy if encasing the drywall is not desired or not available. This perfectly complementing corner bead is used by many as a trim. Bullnose J-Round has a 3/4" radius and is available in both 1/2" (BJ5HDG) and 5/8" (BJ6HDG) widths. Phillips offers this product with galvanized and ShadowFree® surface coatings (BJ5SF, BJ6SF).



SIZES AND PACKAGING

Bullnose J-Round

Length	Pieces Per Carton	Cartons Per Pallet	Feet Per Carton
7'	30	40	210
8'	30	40	240
9'	30	40	270
10'	30	40	300

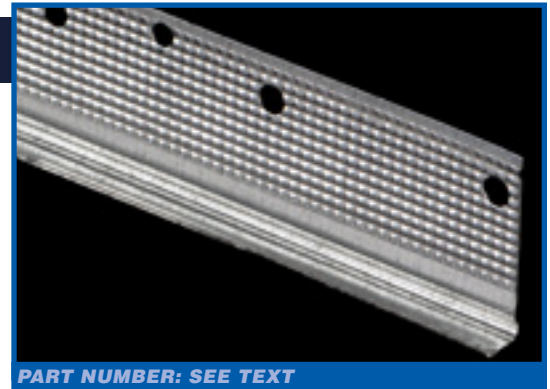
UPC labeling available upon request

L-200 TRIM

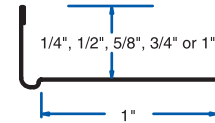
Phillips L-200 trim is a sturdy, steel casing product and a mudable trim. This product provides maximum protection and a professionally finished wallboard edge at window and door jambs. L-200 trim can also be applied where wallboard abuts different surfaces such as suspended ceilings, plaster, beams, masonry and concrete. This product is easily installed to the framing or jamb using standard industry practice. Some consider the L-200 easier to install because the back flange is eliminated. Installation is complete with application of joint compound to the front side for a smooth, ready-to-paint surface. Phillips offers the L-200 in 1/4" (LT2), 1/2" (LT5), 5/8" (LT6), 3/4" (LT7) and 1" (LT1). Available in grey galvanized (EGB) surface coating.

SIZES AND PACKAGING			
L-200 Trim (1/4", 1/2", 5/8", 3/4" & 1")			
Length	Pieces Per Carton	Cartons Per Pallet	Feet Per Carton
8'	63	48	504
10'	50	48	500

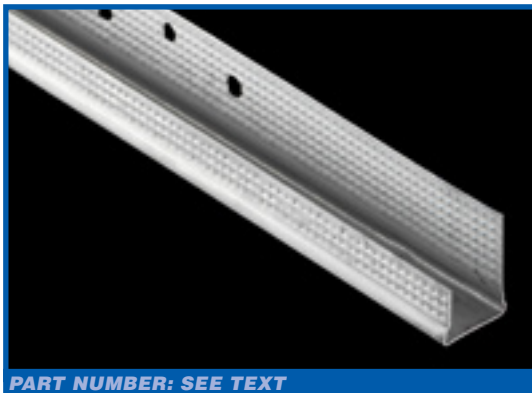
UPC labeling available upon request



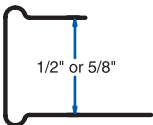
PART NUMBER: SEE TEXT



Drawing not to scale



PART NUMBER: SEE TEXT



Drawing not to scale

U-200 TRIM

Phillips U-200 trim is a sturdy, channel-type steel casing product and a mudable trim. This product provides maximum protection and a professionally finished wallboard edge at window and door jambs. Phillips U-200 trim can also be applied where wallboard abuts different surfaces such as suspended ceilings, plaster, beams, masonry and concrete. This product is easily installed to the framing or jamb using standard industry practice. Installation is complete with application of joint compound to the front side for a smooth, ready-to-paint surface. Phillips offers the U-200 in both 1/2" (UT5) and 5/8" (UT6). Available in grey galvanized (EGB) surface coating.

SIZES AND PACKAGING

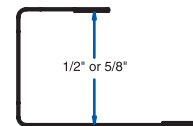
U-200 Trim (1/2" & 5/8")

Length	Pieces Per Carton	Cartons Per Pallet	Feet Per Carton
8'	63	48	504
10'	50	49	500

UPC labeling available upon request



PART NUMBER: SEE TEXT



Drawing not to scale

J-400 TRIM

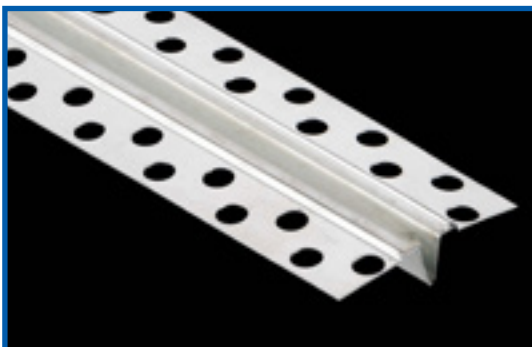
Phillips J-400 trim is an economical steel channel providing edge protection around doors and windows or any partition junction openings. Hemmed edges allow for quick installation and no joint compound is required for finishing. Phillips provides J-400 trim in both 1/2" (JT5) and 5/8" (JT6). Available in grey galvanized (EGB) surface coating.

SIZES AND PACKAGING

J-400 Trim (1/2" & 5/8")

Length	Pieces Per Carton	Cartons Per Pallet	Feet Per Carton
8'	63	48	504
10'	50	49	500

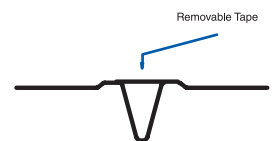
UPC labeling available upon request



PART NUMBER: ECJ093ZNC

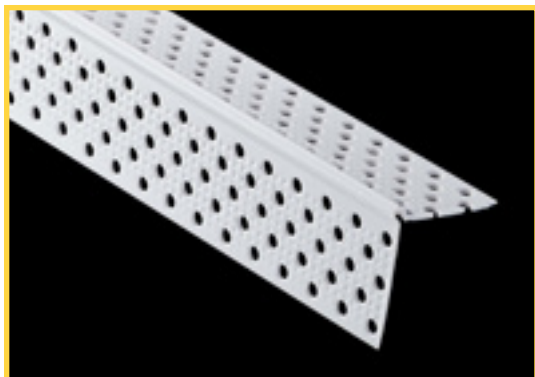
093 EXPANSION CONTROL JOINT

Phillips 093 zinc expansion control joints are manufactured from the highest quality solid zinc coil stock for superior corrosion resistance. An excellent product for interior or exterior applications, Phillips 093 expansion control joints relieve stresses of expansion and contraction across ceilings and wall areas. The opening is protected by plastic tape which can be removed after joint compound or plaster has been applied. This product fits standard 1/4" openings.



Drawing not to scale

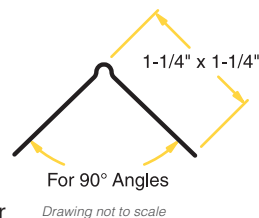
VINYL CORNER BEADS



PART NUMBER: CBRVYL

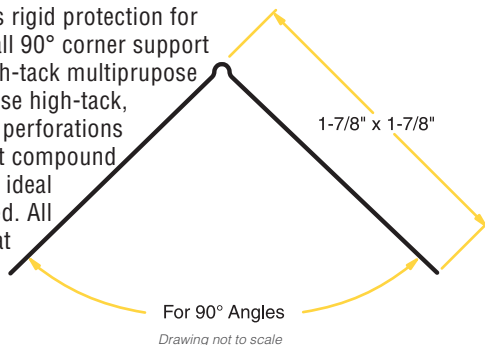
VINYL CORNER BEAD

Phillips gripSTIK® corner bead provides a rigid protection for the exposed edges of wallboard. This easy-to-install 90° corner support can be nailed, stapled or installed with Phillips gripSTIK® multipurpose high-tack web-based spray adhesive (see page 20 for product details). Flanges feature many perforations and deeply knurled mud anchors for excellent joint compound adhesion. The entire product is specially textured to enhance paint and mud adhesion. The standard flange length for this product is 1-1/4".



EXTRA WIDE VINYL CORNER BEAD

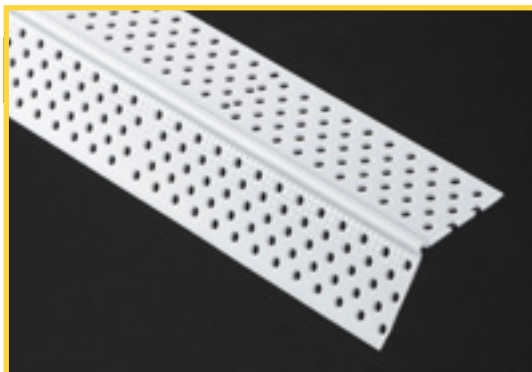
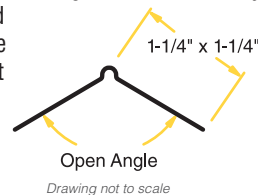
Phillips gripSTIK® extra wide corner bead provides rigid protection for the exposed edges of wallboard. This easy to install 90° corner support can be nailed, stapled or installed along with a high-tack multipurpose spray adhesive (try Phillips gripSTIK® multi-purpose high-tack, web-based spray adhesive). Flanges feature many perforations and deeply knurled mud anchors for excellent joint compound adhesion. The extra wide flange length of 1-7/8" is ideal for those times a longer flange is needed or desired. All Phillips gripSTIK® vinyl beads and trims work great for both drywall and interior veneer applications.



PART NUMBER: CBWVYL

SPLAY CORNER BEAD

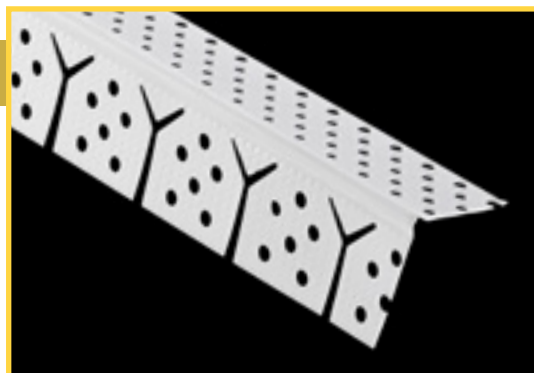
Phillips gripSTIK® splay bead offers a flush fit on a variety of open angle applications exceeding 120°, making this a very versatile product. Easily install using standard industry practice with nails, staples or multipurpose high-tack web-based spray adhesive (see page 20 for product details). Flanges feature many perforations and deeply knurled mud anchors for excellent joint compound adhesion. The entire product is specially textured to enhance paint and mud adhesion. The standard flange length for this product is 1-1/4".



PART NUMBER: CBSVYL

MAX-Flex® ARCHWAY

Phillips gripSTIK® MAX-Flex® archway bead is designed for maximum flexibility as our unique design allows it to conform to almost any radius. Phillips unique MAX-Flex® cut features "Y" shaped slits on the notched flange allowing for superior flexibility without kinking. This product features many perforations, deeply knurled mud anchors and the entire product is specially textured which all greatly enhance paint and mud adhesion. The standard flange length for this product is 1-1/4". Phillips gripSTIK® multipurpose web-based spray adhesive eases installation (see page 20 for details).



PART NUMBER: CBAVYL

SIZES AND PACKAGING

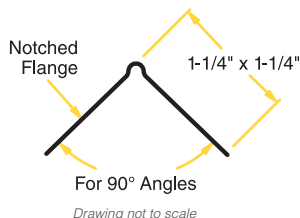
Corner Bead (Regular, Splay & Archway)

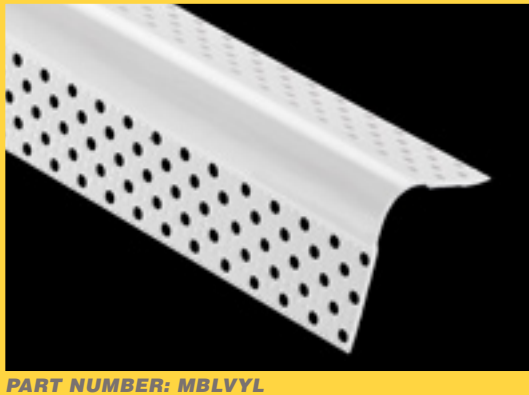
Length	Pieces Per Carton	Cartons Per Pallet	Feet Per Carton
8'	50	50	400
9'	50	50	450
10'	50	50	500

Corner Bead (Extra Wide)

Length	Pieces Per Carton	Cartons Per Pallet	Feet Per Carton
8'	40	35	320
9'	40	35	360
10'	40	35	400

UPC labeling available upon request

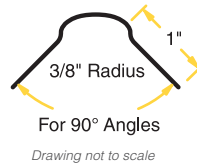




PART NUMBER: MBLVYL

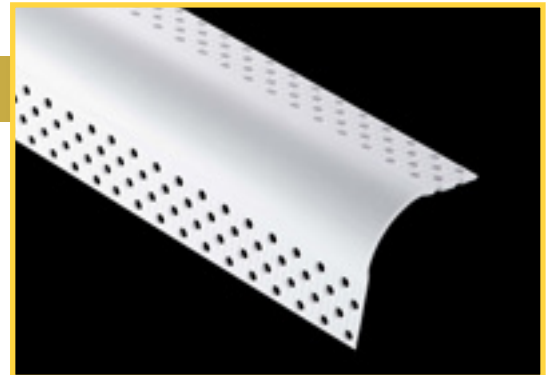
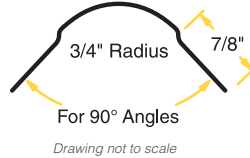
3/8" BULLNOSE (MINI)

Phillips gripSTIK® Bullnose (Mini) is great for accenting detail in niches, layers, outside corners, windows and other areas. Flanges feature many perforations, deeply knurled mud anchors, and the entire product is specially textured to greatly enhance paint and mud adhesion. Easily install Phillips Mini Bullnose products like regular corner bead; no special drywall preparation is needed. Mini Bullnose Splay and Mini MAX-Flex® Bullnose Archway are also available; see next page for details. See below for packaging information. Phillips gripSTIK® multipurpose web-based spray adhesive eases installation (see page 20 for details).

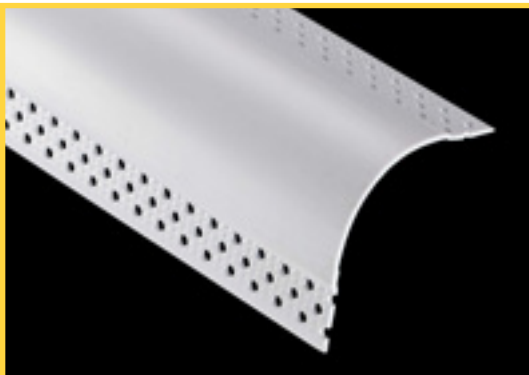


3/4" BULLNOSE

Phillips gripSTIK® bullnose corner beads create a smooth, rounded look to drywall corners and are easily installed using standard industry practice. Flanges feature many perforations, deeply knurled mud anchors, and the entire product is specially textured to greatly enhance paint and mud adhesion. Mini Bullnose Splay and Mini MAX-Flex® Bullnose Archway are also available; see next page for details. See below for packaging information. Phillips gripSTIK® multipurpose web-based spray adhesive eases installation (see page 20 for details).



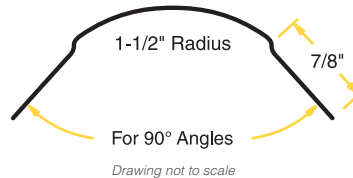
PART NUMBER: BN3VYL



PART NUMBER: BN5VYL

1-1/2" BULLNOSE

Phillips gripSTIK® 1-1/2" bullnose corner beads provide a larger radius for a more pronounced smooth and modern look. Flanges feature many perforations, deeply knurled mud anchors, and the entire product is specially textured to greatly enhance paint and mud adhesion. Mini Bullnose Splay and Mini MAX-Flex® Bullnose Archway are also available; see next page for details. Phillips gripSTIK® multipurpose web-based spray adhesive eases installation (see page 20 for details).



SIZES AND PACKAGING

3/4" Bullnose (Regular, Splay & Archway)

Length	Pieces Per Carton	Cartons Per Pallet	Feet Per Carton
8'	35	50	280
9'	35	50	315
10'	35	50	350

1-1/2" Bullnose (Regular, Splay & Archway)

8'	30	40	240
9'	30	40	270
10'	30	48	300

UPC labeling available upon request

SIZES AND PACKAGING

Mini Bullnose (Regular & Splay)

Length	Pieces Per Carton	Cartons Per Pallet	Feet Per Carton
8'	35	50	280
9'	35	50	315
10'	35	50	350

Mini Bullnose Archway

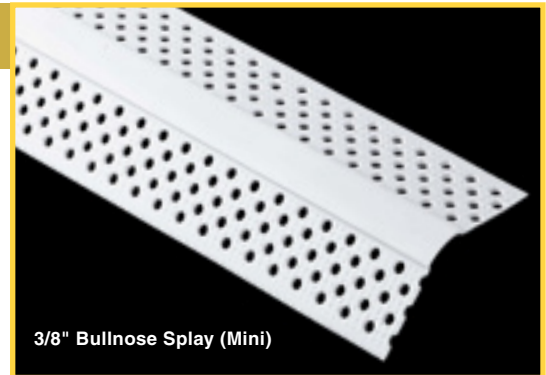
8'	25	50	200
9'	25	50	225
10'	25	50	250

UPC labeling available upon request

BULLNOSE VINYL CORNER BEADS

BULLNOSE SPLAY

Phillips gripSTIK® bullnose splay corner beads create a smooth, rounded look to a variety of open angles exceeding 120°. Flanges feature many perforations, deeply knurled mud anchors, and the entire product is specially textured to greatly enhance paint and mud adhesion. This product is available in 1-1/2" (BS5VYL) radius, 3/4" (BS3VYL) radius and 3/8" (Mini) (MBSVYL) radius. See previous page for packaging information.



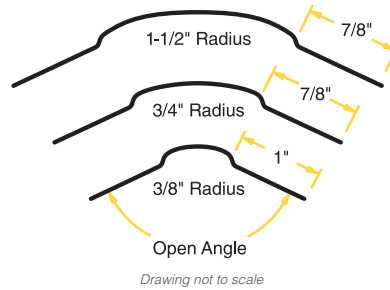
3/8" Bullnose Splay (Mini)

PART NUMBER: MBSVYL



3/4" Bullnose Splay

PART NUMBER: BS3VYL

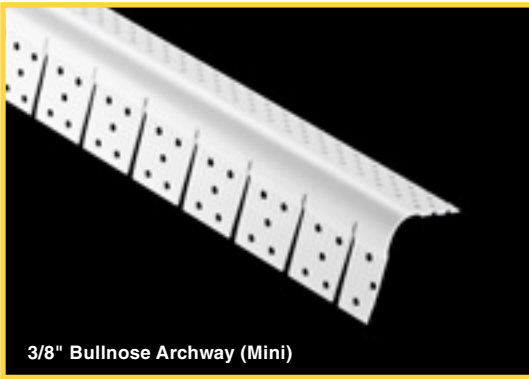


1-1/2" Bullnose Splay

PART NUMBER: BS5VYL

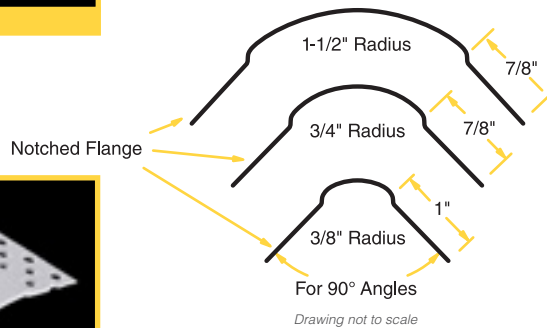
MAX-Flex® BULLNOSE ARCHWAY

Phillips gripSTIK® MAX-Flex® bullnose archway bead is designed for maximum flexibility allowing it to conform to almost any radius creating a round, elegant look. The 3/4" radius and 1-1/2" radius feature a straight-cut design for minimal fill-in. Mini Bullnose archway (3/8") allows for superior flexibility without kinking. Flanges feature many perforations, deeply knurled mud anchors, and the entire product is specially textured to greatly enhance paint and mud adhesion. This product is available in 1-1/2" (BA5VYL) radius, 3/4" (BA3VYL) radius and 3/8" (Mini) (MBAVYL) radius. See previous page for packaging information.



3/8" Bullnose Archway (Mini)

PART NUMBER: MBAVYL



3/4" Bullnose Archway

PART NUMBER: BA3VYL



1-1/2" Bullnose Archway

PART NUMBER: BA5VYL

Use gripSTIK® Multipurpose Web-based Spray Adhesive with Phillips Vinyl Beads & Trims for perfect adhesion. See page 20 for product details.



3/4" & 1-1/2" BULLNOSE KERF

Phillips gripSTIK® bullnose kerf has a unique shortened back flange allowing for easy insertion into grooved door jambs and window frames. Install using standard industry practice. This product is always a great fit and provides the smooth, round appearance associated with bullnose trims. Flanges feature many perforations, deeply knurled mud anchors, and the entire product is specially textured to greatly enhance paint and mud adhesion. Phillips offers vinyl bullnose kerf in both 3/4" (BK3VYL) and 1-1/2" (BK5VYL) radius for your convenience. The 1-1/2" radius provides a more pronounced round appearance adding a modern look to rooms.



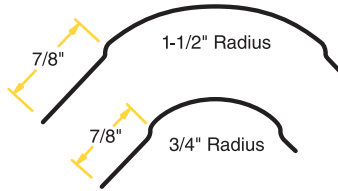
3/4" Bullnose Kerf

PART NUMBER: BK3VYL



1-1/2" Bullnose Kerf

PART NUMBER: BK5VYL



Drawing not to scale

SIZES AND PACKAGING

3/4" Bullnose Kerf

Length	Pieces Per Carton	Cartons Per Pallet	Feet Per Carton
8'	35	50	280
9'	35	50	315
10'	35	50	350

1-1/2" Bullnose Kerf

8'	30	40	240
9'	30	40	270
10'	30	48	300

UPC labeling available upon request

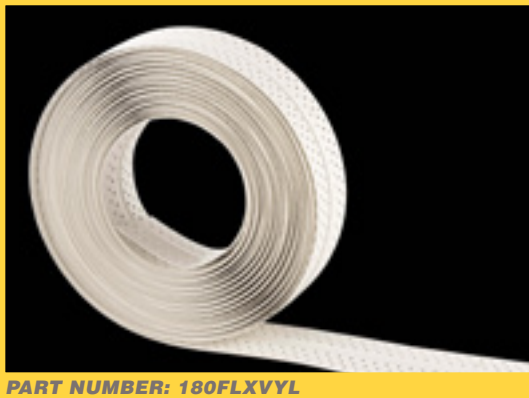


180FLEXKorner™ & EXPANSION JOINT

"Engineered to Perform"

Phillips gripSTIK® Corner Beads:

- » Perforated flanges for excellent joint compound adhesion as the joint compound penetrates through the bead to the drywall to support long-lasting adhesion
- » Deeply knurled mud anchors on flanges enhance joint compound adhesion
- » Works great for both drywall and interior veneer applications



PART NUMBER: 180FLXVYL

SIZES AND PACKAGING

180FLEXKorner™

Width	Length	Rolls Per Carton	Cartons Per Case	Feet Per Case
2-1/2"	50'	1	10	500'

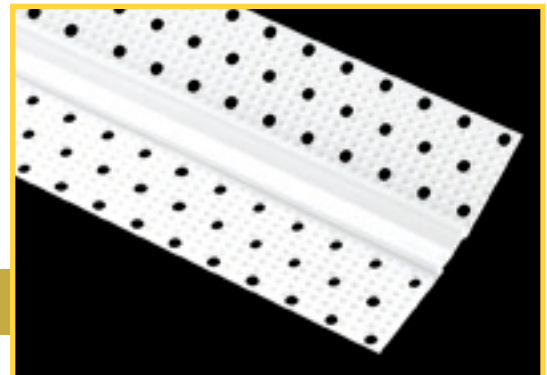
UPC labeling available upon request

180FLEXKorner™ INSIDE/OUTSIDE ROLLED VINYL

Phillips gripSTIK® 180FLEXKorner™ inside/outside rolled vinyl corner bead features a unique flexible angle design that is specially engineered to flex and hold virtually any degree of inside and outside corner without cracking. This durable and versatile product reduces call backs because it maintains shape when settlement occurs. Flanges feature many perforations and deeply knurled mud anchors to greatly enhance mud and paint adhesion. Available in 2-1/2" width and 50' rolls in an easy-to-carry carton.



180FLEXKorner™
INSIDE/OUTSIDE ROLLED CORNER BEAD



PART NUMBER: 180FLXVYL-S

SIZES AND PACKAGING

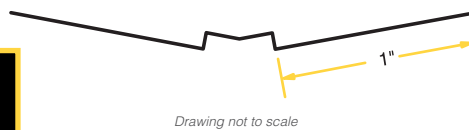
Inside Corner Adjustable

Length	Pieces Per Carton	Cartons Per Pallet	Feet Per Carton
8'	70	40	560
9'	70	40	630
10'	70	48	700

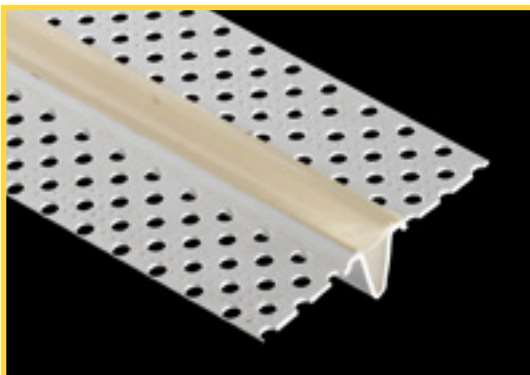
UPC labeling available upon request

180FLEXKorner™ INSIDE/OUTSIDE STICK

Phillips gripSTIK® 180FLEXKorner™ inside/outside vinyl corner bead has a unique flexible angle design that easily adjusts to any degree inside and outside corner. This extremely versatile product has been specially engineered to flex to virtually any degree inside or outside corner without cracking. Phillips offers 180FLEXKorner™ in sticks and also in 50' rolls in an easy-to-carry carton (180FLXVYL) for your convenience.



Drawing not to scale



PART NUMBER: EZSVYL

SIZES AND PACKAGING

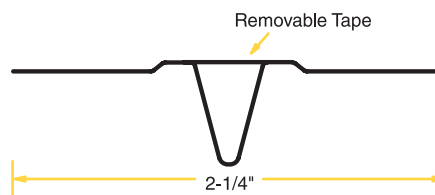
E-Z Strip® Expansion Control Joint

Length	Pieces Per Carton	Cartons Per Pallet	Feet Per Carton
10'	25	48	250

UPC labeling available upon request

E-Z Strip® EXPANSION CONTROL JOINT

Phillips gripSTIK® 093 E-Z Strip® expansion control joint is designed to relieve the stresses of contraction and expansion. The expansion control joint groove is protected by plastic tape that can be easily removed after the joint finishing material has dried, leaving a clean well-formed joint. Easily install this durable and impact resistant product using standard industry practice. The perforated and knurled flanges allow for faster drying and enhance mud adhesion. Can be used in exterior applications. E-Z Strip is UV protected.



Drawing not to scale

"Engineered to Perform"

Phillips gripSTIK® Corner and Transition Caps:

- » Over 50 different corner and transition caps available
- » Works great with Phillips metal, vinyl or paper faced metal bullnose corner beads
- » U.S. Patents: RE34,547; D487,520; D487,156; D501,050 and D486,920

3/4" 3-WAY CORNER

Phillips gripSTIK® 3/4" 3-way corner is designed to easily finish three intersecting bullnose 90° outside corners. This product eliminates the need for mitering and corner filling, saving time and reducing waste. Alignment tabs make it easy to match with Phillips metal, vinyl or paper faced metal bullnose corner beads. Perforated to enhance mud adhesion. Also available in 1/2" (CAP345) and 1-1/2" (CAP387 - see below) radius. Packaging is 50 pieces per carton.



PART NUMBER: CAP387



PART NUMBER: CAP385

1-1/2" 3-WAY CORNER

Phillips gripSTIK® 1-1/2" 3-way corner is designed to easily finish three intersecting bullnose 90° outside corners. This product eliminates the need for mitering and corner filling, saving time and reducing waste. Alignment tabs make it easy to match with Phillips metal, vinyl or paper faced metal bullnose corner beads. Perforated to enhance mud adhesion. Also available in 1/2" (CAP345) and 3/4" (CAP385 - see above) radius. Packaging is 50 pieces per carton.

3/4" 3-WAY SPLAY CORNER

Phillips gripSTIK® 3/4" 3-way splay corner is designed to easily finish where two 90° outside 3/4" bullnose corners intersect with one outside bullnose splay corner. This product eliminates the need for mitering and corner filling, saving time and reducing waste. Alignment tabs make it easy to match with Phillips metal, vinyl or paper faced metal bullnose corner beads. Perforated to enhance mud adhesion. Also available in 1-1/2" (CAP187 - see below) radius. Packaging is 50 pieces per carton.



PART NUMBER: CAP187



PART NUMBER: CAP135

1-1/2" 3-WAY SPLAY CORNER

Phillips gripSTIK® 1-1/2" 3-way off-angle corner is designed to easily finish where two 90° outside 1-1/2" bullnose corners intersect with one outside bullnose splay corner. This product eliminates the need for mitering and corner filling, saving time and reducing waste. Alignment tabs make it easy to match with Phillips metal, vinyl or paper faced metal bullnose corner beads. Perforated to enhance mud adhesion. Also available in 3/4" (CAP135 - see above) radius. Packaging is 50 pieces per carton.

INSIDE CORNER AND TRANSITION CAPS

2-WAY CORNER

Phillips gripSTIK® 2-way corners are designed to easily finish two intersecting 90° outside bullnose corners. This product works great to cap corners of windows, closets, doorways, skylights and other areas. Corner caps eliminate the need for mitering and corner filling, saving time and reducing waste. Perforated to enhance mud adhesion. Alignment tabs make it easy to match with Phillips metal, vinyl or paper faced metal bullnose corner beads. Available in 1/2" (Mini) (CAP245), 3/4" (CAP285) and 1-1/2" (CAP287). Packaging is 50 pieces per carton.



1-1/2" 2-Way Corner

PART NUMBER: CAP287



3/4" 2-Way Corner

PART NUMBER: CAP285

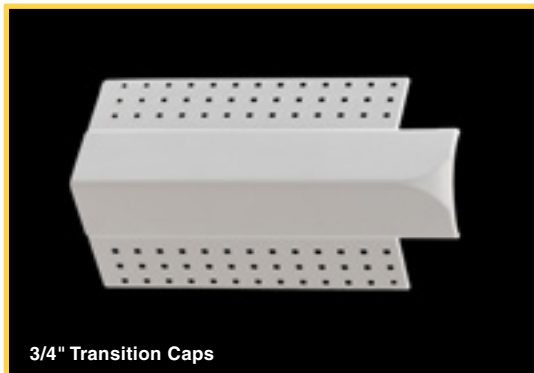
2-WAY SPLAY CORNER

Phillips gripSTIK® 2-way splay corners are designed to easily finish where two splayed outside bullnose corners intersect at angles greater than 90° or open angles. This product works great to corner cap windows, closets, doorways, skylights and other areas. Corner caps eliminate the need for mitering and corner filling, saving time and reducing waste. Perforated to enhance mud adhesion. Alignment tabs make it easy to match with Phillips metal, vinyl or paper faced metal bullnose corner beads. Available in 3/4" (CAP235). Packaging is 50 pieces per carton.



3/4" 2-Way Splay Corner

PART NUMBER: CAP235

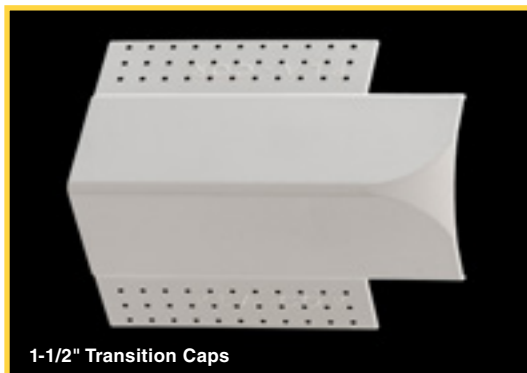


3/4" Transition Caps

PART NUMBER: SEE TEXT

Phillips gripSTIK® transition caps are designed to eliminate gaps between bullnose corner bead and baseboard or crown molding by transitioning bullnose corners to 90° corners. Phillips transition caps install quickly and easily using standard industry practice and can be used with Phillips metal, vinyl or paper faced corner beads. Perforated to enhance mud adhesion. Available in 3/4" Overlap Transition Cap (TRN790), 3/4" Transition Cap with Alignment Tab (TRN8590), 1-1/2" Overlap Transition Cap (TRN890) and 1-1/2" Transition Cap with Alignment Tab (TRN8790). Packaging is 50 pieces per carton.

TRANSITION CAPS



1-1/2" Transition Caps

PART NUMBER: SEE TEXT

DIDN'T FIND THE CORNER OR TRANSITION CAP YOU WERE SEEKING?



CAP390



CAP190

Phillips has over 50 different corner and transition caps available.

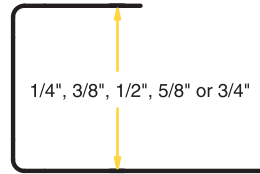
Call your sales representative at 800.822.5055 for more information or visit www.phillipsmfg.com to see Phillips gripSTIK® 90° 3-way square corner cap (CAP390), 3-way splay corner cap (CAP190) and much more.

J-TRIM

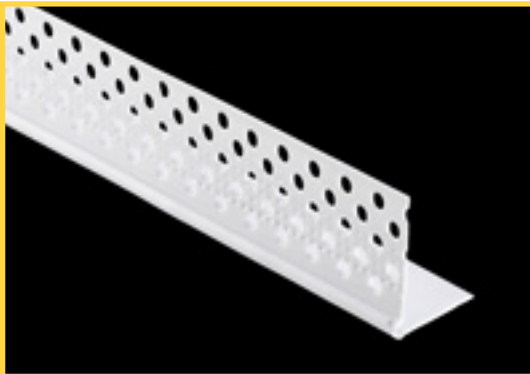
Phillips gripSTIK® J-Trim provides a finished edge at door and window openings along with other various wallboard intersections. This durable and impact resistant trim was designed with ease of installation in mind. J-Trim does not require any joint compound and can be nailed or slipped on. Install using standard industry practice. Phillips offers this product in 1/4" (JT2VYL), 3/8" (JT3VYL), 1/2" (JT5VYL), 5/8" (JT6VYL) and 3/4" (JT7VYL).



PART NUMBER: SEE TEXT



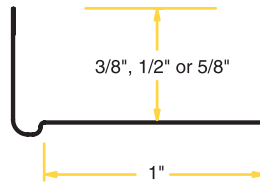
Drawing not to scale



PART NUMBER: SEE TEXT

L-TRIM

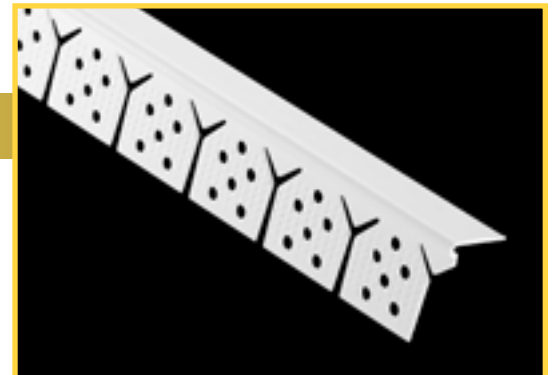
Phillips gripSTIK® L-Trim provides a clean, sharp edge at door, window, ceiling and other terminations. Install using standard industry practice. The many perforations and raised shoulder enhance strong compound adhesion and provide for a flush finish. Its deeply knurled mud anchors and specially textured surface provide superior paint and mud adhesion. Phillips offers this product in 3/8" (LT3VYL), 1/2" (LT5VYL) and 5/8" (LT6VYL).



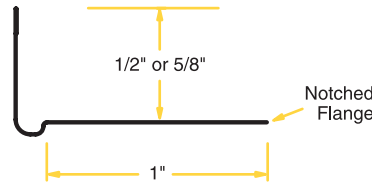
Drawing not to scale

MAX-Flex® L-TRIM ARCHWAY

Phillips gripSTIK® MAX-Flex® L-Trim archway is designed for maximum flexibility, conforming to almost any radius. This product features "Y" shaped slits on the notched flange for superior flexibility without kinking. The entire product is specially textured to enhance paint and mud adhesion. This product works great to provide a clean edge at door, window, ceiling and other terminations. This product is available in 1/2" (LA5VYL) and 5/8" (LA6VYL) sizes.



PART NUMBER: SEE TEXT



Drawing not to scale

SIZES AND PACKAGING

J-Trim (All Sizes)

Length	Pieces Per Carton	Cartons Per Pallet	Feet Per Carton
8'	50	40	400
9'	50	40	450
10'	50	48	500

L-Trim (All Sizes)

8'	80	40	640
9'	80	40	720
10'	80	48	800

UPC labeling available upon request

SIZES AND PACKAGING

MAX-Flex® L-Trim Archway (All Sizes)

Length	Pieces Per Carton	Cartons Per Pallet	Feet Per Carton
8'	80	40	640
9'	80	40	720
10'	80	48	800

UPC labeling available upon request

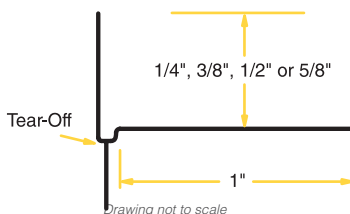
L-TEAR STRIP

L-TEAR STRIP

Phillips gripSTIK® L-Tear Strip provides a clean line at a variety of wallboard intersections. The tear-off strip provides a protective edge and a guide for drywall finishing knives. Once joint compound is applied, finished and painted, the tear-off strip is removed to form a clean, crisp edge. Its deeply knurled mud anchors, many perforations, and specially textured surface provide superior paint and joint compound adhesion. Phillips offers this product in 1/4" (TS2VYL), 3/8" (TS3VYL), 1/2" (TS5VYL) and 5/8" (TS6VYL).



PART NUMBER: SEE TEXT



PART NUMBER: FTSVYL

FLAT L-TEAR STRIP

Phillips gripSTIK® Flat L-Tear Strip provides a clean line at a variety of wallboard intersections. A one-size-fits-all product, the Flat L-Tear Strip is used where a straight edge is needed and there is not enough room at the intersection for the leg. The tear-off strip provides a protective edge and a guide for drywall finishing knives. Once joint compound is applied, finished and painted, the tear-off strip is removed to form a clean, crisp edge. This product features deeply knurled mud anchors, many perforations, and specially textured surface to provide superior paint and joint compound adhesion.



Drawing not to scale

gripSTIK® MULTIPURPOSE SPRAY ADHESIVE

Phillips gripSTIK® multipurpose spray adhesive is a high-tack, web-based spray adhesive used in many different applications and is ideal for adhering vinyl corner bead to drywall. This product works great when applying Phillips gripSTIK® vinyl beads and trims (see pages 13-20 for product details) and is commonly used to hang plastic sheathing or barriers on environmental abatement projects. This web-based spray adhesive features a unique adjustable nozzle for desired spray strength and width. The adhesive is tinted to help prevent overspray. This high quality product is available in 17 oz. cans. Packaging is 12 cans per case, 80 cases per pallet.



PART NUMBER: 999SPRAY

SIZES AND PACKAGING

L-Tear Strip (All Sizes)

Length	Pieces Per Carton	Cartons Per Pallet	Feet Per Carton
8'	50	40	400
9'	50	40	450
10'	50	48	500

Flat L-Tear Strip

8'	50	48	400
10'	50	48	500

UPC labeling available upon request

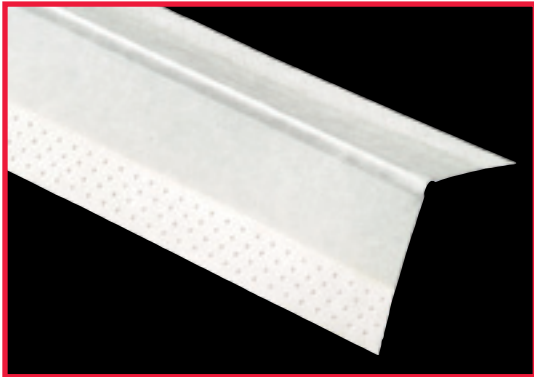




"Engineered to Perform"

Phillips kwikSTIK® Paper Faced Products:

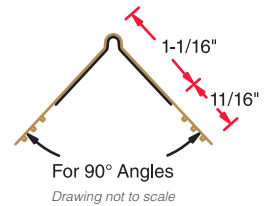
- » Rust preventative fully galvanized coating to withstand elements and adverse drying conditions
- » No edge cracking
- » No nail pops
- » High strength proprietary paper prevents balling when sanding



PART NUMBER: PDW12EGBNC

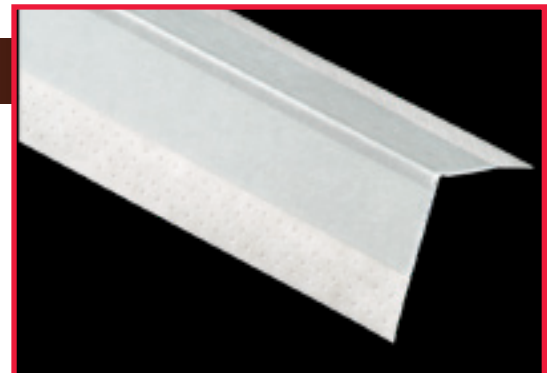
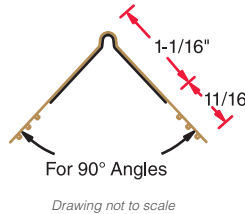
P1 DELUXE SUPER WIDE (PDW)

Phillips kwikSTIK® P1 Deluxe Super Wide outside corner bead features wider flanges for more complete coverage when finishing 90° corners. This product meets ASTM standard C1047. No fasteners or nails are needed for installation.



P1 SUPER WIDE (PSW)

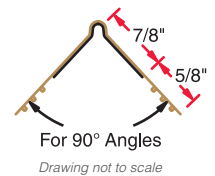
Phillips kwikSTIK® P1 Super Wide outside corner bead features wider flanges for more complete coverage. This product is essentially the same product as P1 Deluxe Super Wide except P1 Super Wide utilizes slightly lighter steel making it a more economical product. This slightly lighter steel complies with ASTM standard C1047 as well as all other applicable ASTM standard requirements.



PART NUMBER: PSW10EGB

P1 XW EL (PEW)

Phillips kwikSTIK® P1 XW EL outside corner bead can be used on 90° outside corners with any standard drywall thickness for a clean, professional finish. This product features at least 50% thicker steel than ASTM standard C1047 minimum requirement for a strong, durable corner. P1 XW EL is tape-on, meaning no fasteners or nails are needed for installation. Specially engineered paper provides superior mud and paint adhesion.



PART NUMBER: PEW14EGBNC

SIZES AND PACKAGING

PDW, PSW, PEW

Length	Pieces Per Carton	Cartons Per Pallet	Feet Per Carton
8'	50	56	400
9'	50	56	450
10'	50	56	500

UPC labeling available upon request



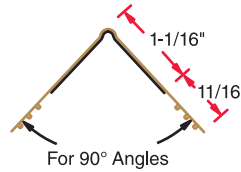
TAPE-ON PAPER FACED CORNER BEADS



PART NUMBER: P1M14EGBNC

P1 MICRO BEAD (P1M)

Phillips kwikSTIK® P1 Micro Bead outside corner bead is manufactured with ease and speed of installation in mind. With its smaller bead and wider flanges, this product goes up fast and requires less mudding, saving both time and money. Phillips P1 Micro Bead features at least 50% thicker steel than ASTM standard C1047 minimum requirement for a strong, durable corner. No fasteners or nails are needed for installation. Top quality paper provides superior mud and paint adhesion.



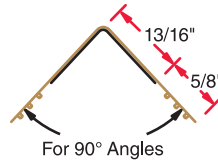
Drawing not to scale



PART NUMBER: P1N14EGBNC

NO BEAD P1 X EL NB (P1N)

Phillips kwikSTIK® P1 X EL NB outside square corner bead is designed as an economical product as it features no bead meaning minimal joint compound is required for installation. Phillips P1 X EL NB features approximately 20% thicker steel than ASTM standard C1047 minimum requirement for a strong, durable corner. No fasteners or nails are needed for installation, and specially engineered paper provides superior mud and paint adhesion. See page 24 for No Bead Super Wide (PNB).



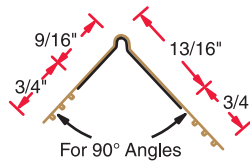
Drawing not to scale



PART NUMBER: PUL14EGBNC

P1W UNEVEN LEG (PUL)

Phillips P1W outside square corner bead features an uneven leg designed to finish 90° corners. This product features at least 50% thicker steel than ASTM standard C1047 minimum requirement for a strong, durable corner. No fasteners or nails are needed for installation, and specially engineered paper provides superior mud and paint adhesion.



Drawing not to scale

SIZES AND PACKAGING

P1M, P1N, PUL

Length	Pieces Per Carton	Cartons Per Pallet	Feet Per Carton
8'	50	56	400
9'	50	56	450
10'	50	56	500

UPC labeling available upon request

"Engineered to Perform"

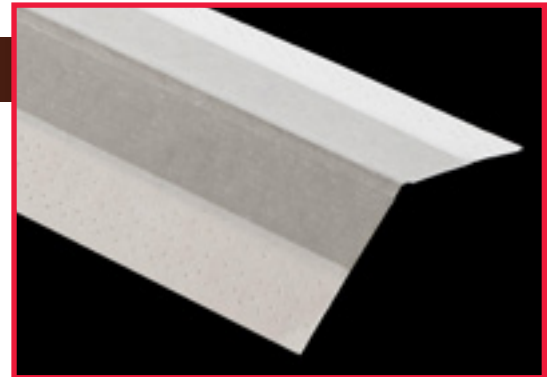
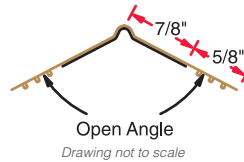
Phillips kwikSTIK® Paper Faced Products:

- » No fasteners or nails needed for installation
- » Perforated to help drying and serve as mud anchors
- » Features approximately 30% more mud anchors per square inch than competitive products
- » Proprietary paper composition promoting high wet and tear strength



P1-OS SPLAY (PSS)

Phillips kwikSTIK® P1-OS outside splay corner bead is designed to finish open angle corners exceeding 120°. P1-OS features over 50% thicker steel than ASTM standard C1047 minimum requirement for a strong, durable corner. No fasteners or nails are needed for installation.



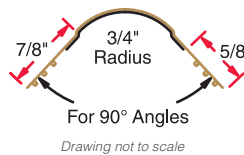
PART NUMBER: PSS14EGBNC



PART NUMBER: PDT12EGBNC

DELUXE BULLNOSE (PDT)

Phillips kwikSTIK® 3/4" Bullnose corner bead is an economical bead providing a round, smooth appearance to 90° outside corners. No fasteners or nails are needed for installation, and specially engineered paper provides superior mud and paint adhesion.



SIZES AND PACKAGING

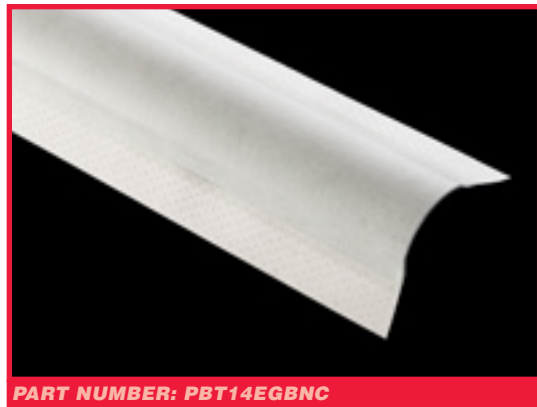
PSS, PDT

Length	Pieces Per Carton	Cartons Per Pallet	Feet Per Carton
8'	50	56	400
9'	50	56	450
10'	50	56	500

UPC labeling available upon request



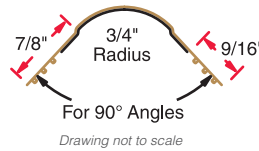
TAPE-ON BULLNOSE PAPER FACED CORNER BEADS



PART NUMBER: PBT14EGBNC

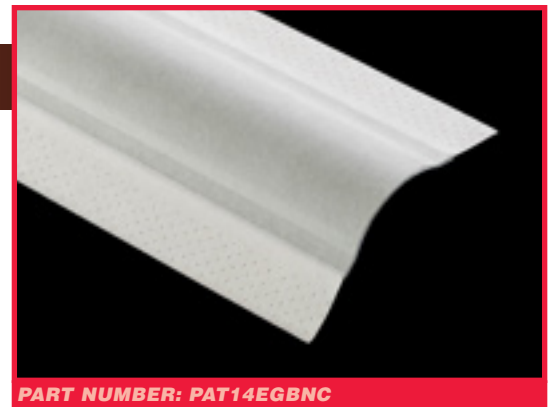
SLOK (PBT)

Phillips kwikSTIK® 3/4" SLOK bullnose corner bead provides a smooth, rounded finish to outside 90° corners. This product features approximately 20% thicker steel than ASTM standard C1047 minimum requirement for a strong, durable corner. Specially engineered paper provides superior mud and paint adhesion on all Phillips paper faced products. No fasteners or nails are needed for installation with Phillips kwikSTIK® tape-on corner beads.

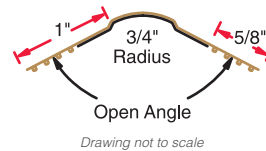


SLOK-OS (PAT)

Phillips kwikSTIK® 3/4" SLOK-OS bullnose splay corner bead works great to provide a more pronounced round finish to outside corners exceeding 120°. This product features approximately 20% thicker steel than ASTM standard C1047 minimum requirement for a strong, durable corner. Specially engineered paper provides superior mud and paint adhesion on all Phillips paper faced products. No fasteners or nails are needed for installation with Phillips kwikSTIK® tape-on corner beads.



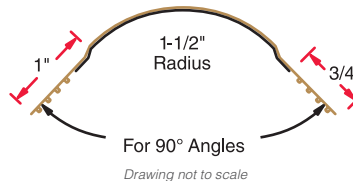
PART NUMBER: PAT14EGBNC



PART NUMBER: PHT14EGBNC

1-1/2" BULLNOSE (PHT)

Phillips kwikSTIK® 1-1/2" Bullnose corner bead works great to provide a more pronounced round finish to outside 90° corners. This product features approximately 20% thicker steel than ASTM standard C1047 minimum requirement for a strong, durable corner. Specially engineered paper provides superior mud and paint adhesion on all Phillips paper faced products. No fasteners or nails are needed for installation with Phillips kwikSTIK® tape-on corner beads.



SIZES AND PACKAGING

PBT, PAT

Length	Pieces Per Carton	Cartons Per Pallet	Feet Per Carton
8'	50	56	400
9'	50	56	450
10'	50	56	500

UPC labeling available upon request

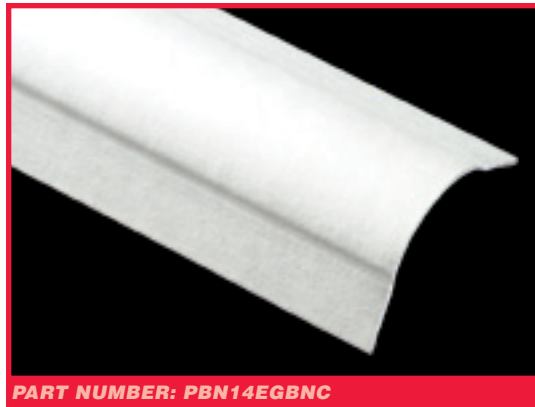
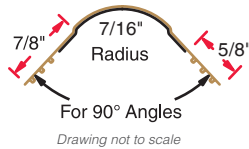
SIZES AND PACKAGING

PHT

Length	Pieces Per Carton	Cartons Per Pallet	Feet Per Carton
8'	25	56	200
9'	25	56	225
10'	25	56	250

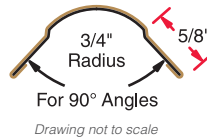
MINI BULLNOSE (PMB)

Phillips kwikSTIK® Paper-Faced Tape-On Metal Bullnose Corner Beads (mini) are used on 90° outside corners with any standard drywall thickness for smooth, rounded corners. The rigid steel-reinforced corner is covered with a unique, high strength paper providing maximum strength and protection while preventing cracking caused by the movement or shrinkage of framing members. This product utilizes thicker steel that meet ASTM standard C1047. Install by pressing firmly into joint compound and removing excess compound with a drywall knife or clean rag.



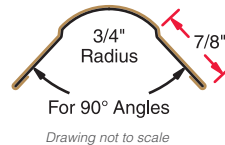
SLOK-N (PBN)

Phillips kwikSTIK® SLOK-N nail-on bullnose corner bead is designed for smooth, round outside corners where nailing or other mechanical fastening is desired. This metal corner bead is covered with our specially engineered paper providing superior mud and paint adhesion. SLOK-N features approximately 20% thicker steel than ASTM standard C1047 minimum requirement for a strong, durable corner.



SLOK-NXW (PEN)

Phillips kwikSTIK® SLOK-NXW nail-on bullnose extra wide corner bead is designed for smooth, round outside corners where nailing or other mechanical fastening is desired. This product provides wider flanges for easier nailing and maximum coverage. SLOK-NXW features approximately 20% thicker steel than ASTM standard C1047 minimum requirement for a strong, durable corner. This metal corner bead is covered with our specially engineered paper providing superior mud and paint adhesion.



SIZES AND PACKAGING

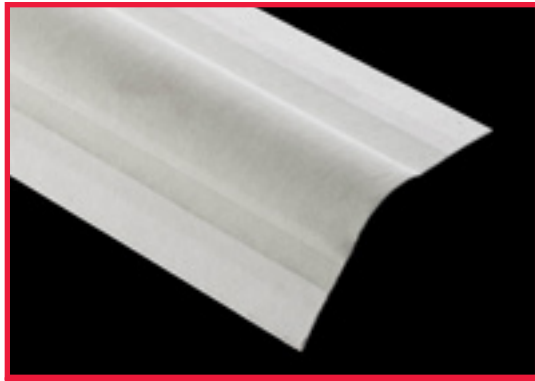
PMB, PBN, PEN

Length	Pieces Per Carton	Cartons Per Pallet	Feet Per Carton
8'	50	56	400
9'	50	56	450
10'	50	56	500

UPC labeling available upon request



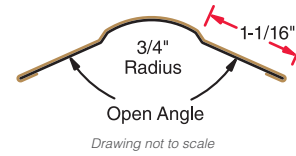
NAIL-ON PAPER FACED CORNER BEADS



PART NUMBER: PAN14EGBNC

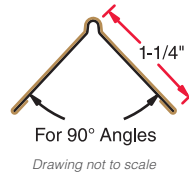
SLOK-NOS (PAN)

Phillips kwikSTIK® SLOK-NOS nail-on bullnose splay corner bead provides a round, smooth corner to open angles exceeding 120° where nailing or other mechanical fastening is desired. This product features approximately 20% thicker steel than ASTM standard C1047 minimum requirement for a strong, durable corner. SLOK-NOS is covered with our specially engineered paper providing superior mud and paint adhesion.



NAIL-ON SQUARE BEAD (PNW)

Phillips kwikSTIK® nail-on square bead is used on 90° corners for a clean professional look. This metal corner bead is covered with our specially engineered paper providing superior paint and mud adhesion. Standard flange length is 1-1/4".



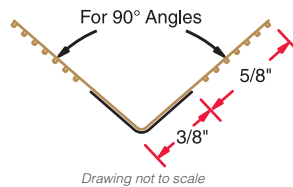
PART NUMBER: PNW14EGBNC



PART NUMBER: PIC14EGB

P2 (PIC)

Phillips kwikSTIK® P2 tape-on inside corner trim is designed to form a true inside (90°) corner. This product features approximately 20% thicker steel than ASTM standard C1047 minimum requirement for a strong, durable inside corner. P2 is tape-on meaning no fasteners or nails are needed for installation. Specially engineered paper provides superior mud and paint adhesion.



SIZES AND PACKAGING

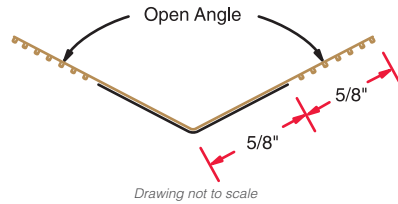
PAN, PNW, PIC

Length	Pieces Per Carton	Cartons Per Pallet	Feet Per Carton
8'	50	56	400
9'	50	56	450
10'	50	56	500

UPC labeling available upon request

P2-OS (PSI)

Phillips kwikSTIK® P2-OS tape-on splay inside corner is designed for wider open angles on inside corners exceeding 120°. This product features approximately 20% thicker steel than ASTM standard C1047 minimum requirement for a strong, durable inside corner. No fasteners or nails are needed for installation. Specially engineered paper provides superior mud and paint adhesion.



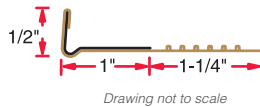
PART NUMBER: PSI14EGB



PART NUMBER: PL114EGB

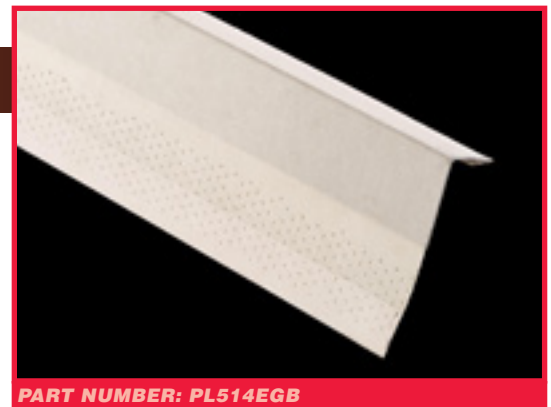
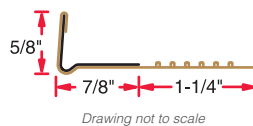
1/2" P4 L-TRIM (PL1)

Phillips kwikSTIK® 1/2" P4 L-Trim tape-on trim is ideal where wallboard abuts with suspended ceilings, beams, plaster, masonry and concrete walls, as well as untrimmed door and window jambs. L-Trim features approximately 20% thicker steel than ASTM standard C1047 minimum requirement for a strong, durable corner. No fasteners or nails are needed for installation, and specially engineered paper provides superior mud and paint adhesion. Also available without a bead.



5/8" P4 L-TRIM (PL5)

Phillips kwikSTIK® 5/8" P4 L-Trim tape-on trim is ideal where wallboard abuts with suspended ceilings, beams, plaster, masonry and concrete walls, as well as untrimmed door and window jambs. This product features approximately 20% thicker steel than ASTM standard C1047 minimum requirement for a strong, durable corner. This product is tape-on meaning no fasteners or nails are needed for installation. Specially engineered paper provides superior mud and paint adhesion. Also available without a bead.



PART NUMBER: PL514EGB

SIZES AND PACKAGING

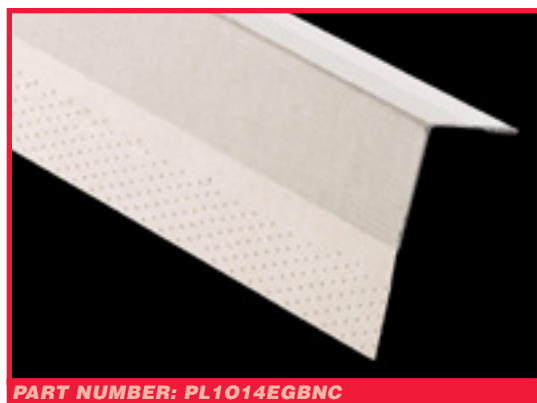
PSI, PL1, PL5

Length	Pieces Per Carton	Cartons Per Pallet	Feet Per Carton
8'	50	56	400
9'	50	56	450
10'	50	56	500

UPC labeling available upon request



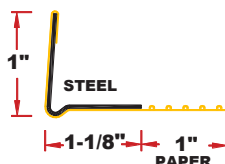
PAPER FACED TRIMS



PART NUMBER: PL1014EGBNC

P4 PAPER-FACED METAL TAPE-ON (PL10)

Phillips kwikSTIK® Paper-Faced 1" P4 L-Trim tape-on trim is ideal where wallboard abuts with suspended ceilings, plaster, masonry and concrete walls, as well as untrimmed door and window jambs. Features over 20% thicker steel than ASTM standard C1047 minimum requirement for a strong, durable inside corner. The rigid steel-reinforced corner is covered with a unique, high strength paper providing maximum strength and protection while preventing cracking caused by the movement or shrinkage of framing members. This product meets ASTM C1047 and ASTM A653.



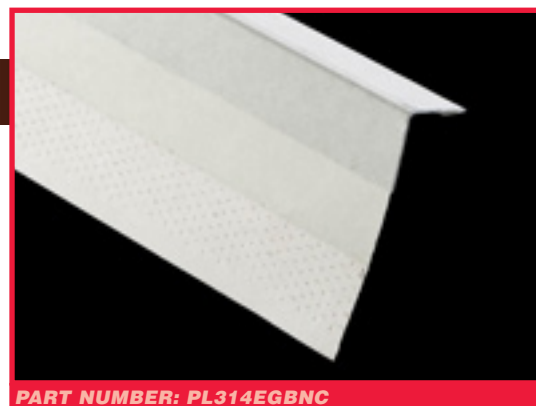
Drawing not to scale

P3 PAPER-FACED METAL TAPE-ON (PL3)

Phillips kwikSTIK® Paper-Faced 3/4" P3 L-Trim tape-on trim is ideal where wallboard abuts with suspended ceilings, plaster, masonry and concrete walls, as well as untrimmed door and window jambs. Features over 20% thicker steel than ASTM standard C1047 minimum requirement for a strong, durable inside corner. The rigid steel-reinforced corner is covered with a unique, high strength paper providing maximum strength and protection while preventing cracking caused by the movement or shrinkage of framing members. This product meets ASTM C1047 and ASTM A653.



Drawing not to scale



PART NUMBER: PL314EGBNC



PART NUMBER: HOPPEROC

MUD HOPPER

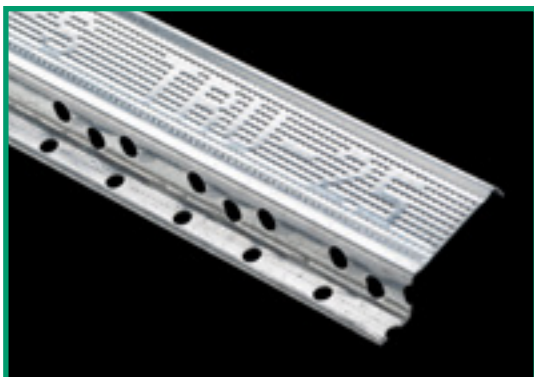
Phillips Mud Hoppers work great to easily install kwikSTIK® Paper Faced Beads and Trims. This hopper is designed for all tape-on 90°, 3/4" bullnose and L beads. Phillips Mud Hoppers eliminate time consuming work, provide easy clean-up and are lightweight. Ask your Phillips sales representative for more information.

SIZES AND PACKAGING

P4, P3

Length	Pieces Per Carton	Cartons Per Pallet	Feet Per Carton
8'	50	56	400
9'	50	56	450
10'	50	56	500

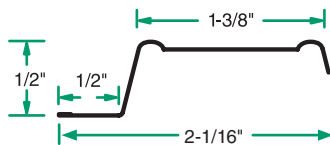
UPC labeling available upon request



PART NUMBER: RC125HDG

RC-1 Tru-25® GAUGE

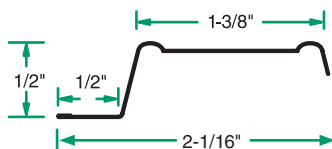
Phillips RC-1 Tru-25® is a resilient sound channel manufactured to exacting specifications to minimize sound transmission through wall partitions and ceilings. Phillips RC-1 works great to prevent ridging and cracking in ceilings. RC-1 is deeply knurled for positive screw placement and to eliminate wandering. Phillips offers this product in 25 and 20 gauge. See below for packaging information.



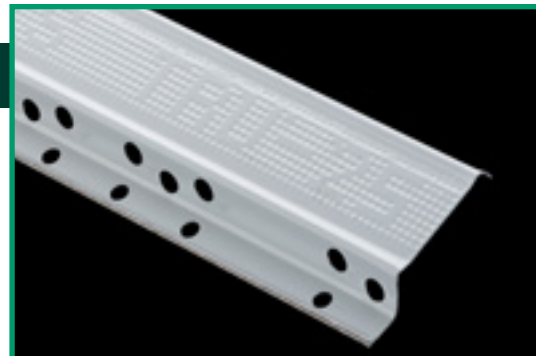
Drawing not to scale

RC-1 Weath-Ex® Tru-25® GAUGE

Phillips RC-1 Weath-Ex® Tru-25® is a resilient sound channel manufactured to exacting specifications to minimize sound transmission through wall partitions and ceilings. Phillips RC-1 works great to prevent ridging and cracking in ceilings. RC-1 is deeply knurled for positive screw placement and to eliminate wandering. Phillips RC-1 Weath-Ex® has an extra surface coating over hot-dipped galvanized material to provide extra corrosion protection. See below for packaging information.



Drawing not to scale



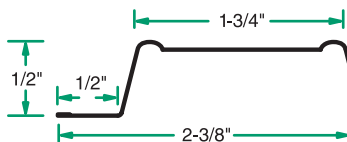
PART NUMBER: RC125HDP



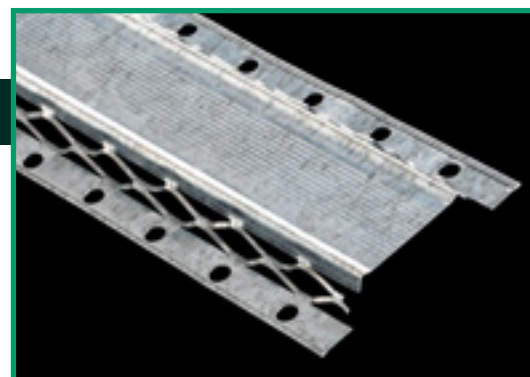
PART NUMBER: RC1XLHDG

RC-XL

Phillips RC-XL is a resilient sound channel manufactured to exacting specifications to minimize sound transmission through wall partitions and ceilings. Phillips RC-XL works great to prevent ridging and cracking in ceilings. RC-XL is deeply knurled for positive screw placement and to eliminate wandering. The expanded width fits a wider variety of rated assemblies. See below for packaging information.



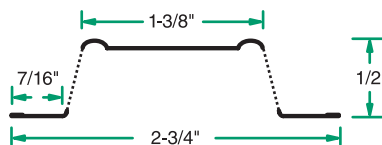
Drawing not to scale



PART NUMBER: RC225HDG

RC-2 (TWO LEG RESILIENT SOUND CHANNEL)

Phillips RC-2 resilient sound channel is used as cross furring members for resilient attachment of gypsum wallboard or lath on ceilings and partitions. RC-2 features expanded metal which decreases sound transmission through wall partitions and ceilings. Hemmed edges allow for safe and easy installation. The RC-2 features two legs for greater attachment security. Channel depth is 1/2", and it is manufactured with 25 gauge galvanized steel.



Drawing not to scale

SIZES AND PACKAGING

RC-1, RC-XL

Length	Pieces Per Bundle	Bundles Per Pallet	Feet Per Bundle
10'	20	50	200
12'	20	50	240

UPC labeling available upon request

SIZES AND PACKAGING

RC-2

Length	Pieces Per Bundle	Bundles Per Pallet	Feet Per Bundle
10'	40	42	400
12'	40	42	480

UPC labeling available upon request

CHANNELS



"Engineered to Perform"

Phillips Metal Channels:

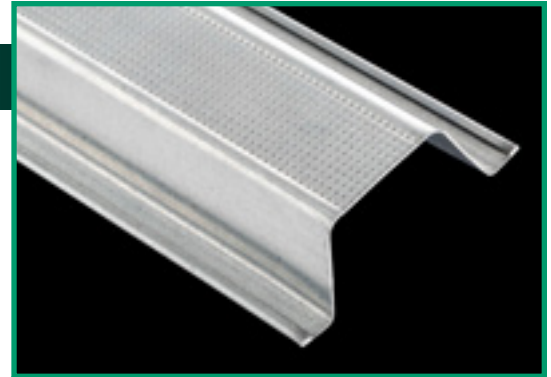
- » Wide nailing flanges for positive clip attachment
- » Hemmed edges and knurling ensure positive screw location and eliminate wandering

7/8" DWC HAT FURRING CHANNEL

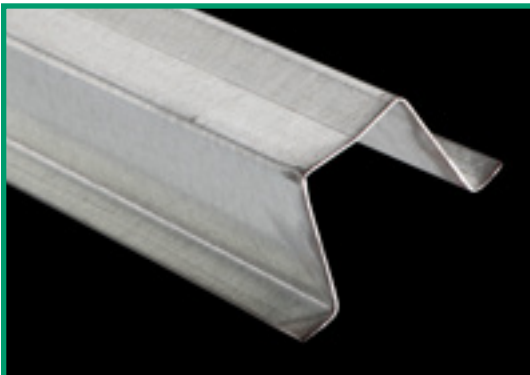
Phillips 7/8" DWC Hat Furring Channel is a ceiling and wall furring channel designed with wide nailing flanges for positive clip attachment. Phillips offers this product in 25 and 20 gauge steel. In 25 gauge steel, this product features hemmed edges and knurling to ensure positive screw placement and eliminate wandering. The standard length is 12'; however, other lengths may be available.



Drawing not to scale



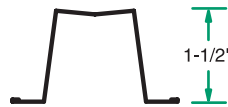
PART NUMBER: 087F125



PART NUMBER: 150F125

1-1/2" DWC HAT FURRING CHANNEL

Phillips 1-1/2" DWC Hat Furring Channel features a deeper furring channel for an increasing number of applications. Phillips offers this product in 25 and 20 gauge steel. In 25 gauge steel, this product features hemmed edges and knurling to ensure positive screw placement and eliminate wandering. The standard length is 12'; however, other lengths may be available.



Drawing not to scale

SIZES AND PACKAGING

DWC Hat Furring Channel

Product Size	Length	Pieces Per Bundle	Bundles Per Pallet	Feet Per Bundle
20 Gauge				
7/8"	12'	10	45	120
1-1/2"	12'	10	45	120
25 Gauge				
7/8"	12'	20	45	240
1-1/2"	12'	20	45	240

UPC labeling available upon request



PART NUMBER: SEE TEXT

COLD ROLLED CHANNEL

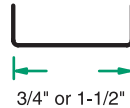
Phillips Cold Rolled Channel is a superior channel used for ceilings and laterally bracing studs. Also utilized for suspended ceilings and partition construction. Features tightly formed corners and consistent equal height legs to facilitate ease of installation. Phillips provides this product hot-dipped galvanized. Phillips Cold Rolled Channel is manufactured from 16 gauge steel and is available in 3/4" (075U50) and 1-1/2" (150U50).

SIZES AND PACKAGING

Cold Rolled Channel

Length	Pieces Per Bundle	Bundles Per Pallet	Feet Per Bundle
10'	10	40	100
16'	10	40	160
20'	10	40	200

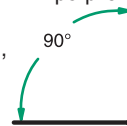
UPC labeling available upon request



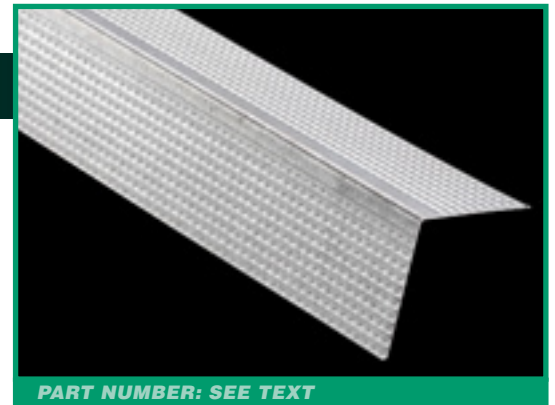
Drawing not to scale

KNURLED ANGLE RUNNER 90° (UTILITY ANGLE)

Phillips Knurled Angle Runner is a multi-purpose steel 90° angle ideal for bridging and backing around perimeters of ceiling, as a vertical attachment where gypsum partitions intersect with other surfaces, and other applications. This product is used in caged beam construction as well as in place of studs and tracks in chase walls. Apply angles as floor and ceiling runners, plus dozens of other applications. Phillips offers this product in 25, 20 and 18 gauge steel. The standard sizes are 1-1/2" x 1-1/2" (150A150) and 2" x 2" (200A200); however, Phillips provides other custom sizes to suit all needs. Packaging depends on your custom size, gauge and length. Standard length is 10'. For standard packaging information, please visit Phillips website at www.phillipsmfg.com.



Drawing not to scale



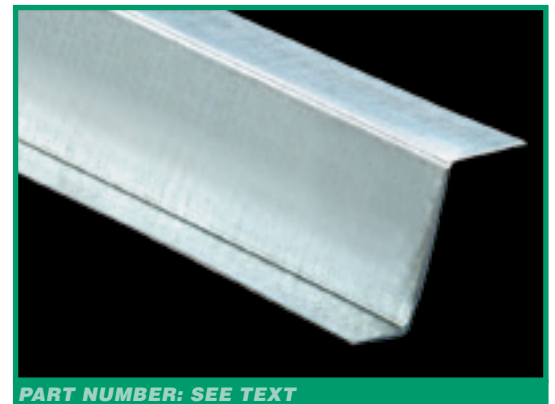
PART NUMBER: SEE TEXT



PART NUMBER: SEE TEXT

Z-FURRING CHANNEL

Phillips Z-Furring Channel is used to furr out interior masonry, poured concrete and other applications. This product supports insulation while providing a uniform plane for gypsum panel attachment. Phillips Z-Furring Channel is available in 1" (ZCH100), 1-1/2" (ZCH150) and 2" (ZCH200) and comes in 25 and 20 gauge steel. Also, available without holes (NH) upon request.



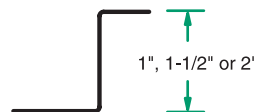
PART NUMBER: SEE TEXT

SIZES AND PACKAGING

Z-Furring Channel (All Sizes)

Length	Pieces Per Bundle	Bundles Per Pallet	Feet Per Bundle
20 Gauge			
10'	10	60	100
12'	10	60	120
25 Gauge			
10'	20	60	200
12'	20	60	240

UPC labeling available upon request

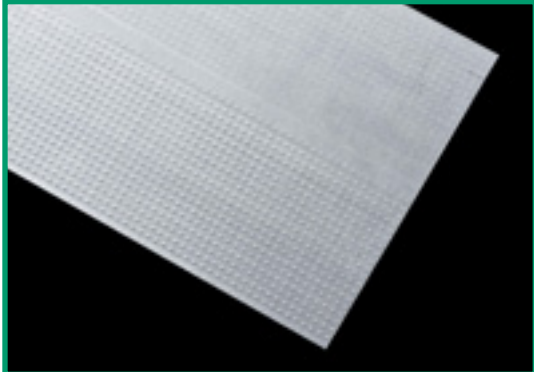


Drawing not to scale

"Engineered to Perform"

Phillips Flat Strap:

- » Deeply knurled to eliminate screw wandering
- » Variety of sizes to suit your needs



PART NUMBER: CUSTOM

FLAT STRAP (FLAT STOCK)

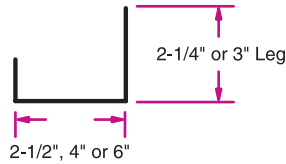
Phillips Flat Strap is a multi-purpose product used on a large number of applications. This product is commonly used as a backer plate to support shelves, cabinets, fixtures and handrails when installed to metal or wood framing. This product is deeply knurled for positive screw placement and to eliminate wandering. Phillips offers this product in 25, 20, 18 and 16 gauge steel. This product is readily available in a variety of widths and lengths; ask your sales representative for more information. Standard packaging is 250 pieces per pallet.

» PHILLIPS TOP PRIORITY IS CUSTOMER SATISFACTION INCLUDING ON-TIME DELIVERIES

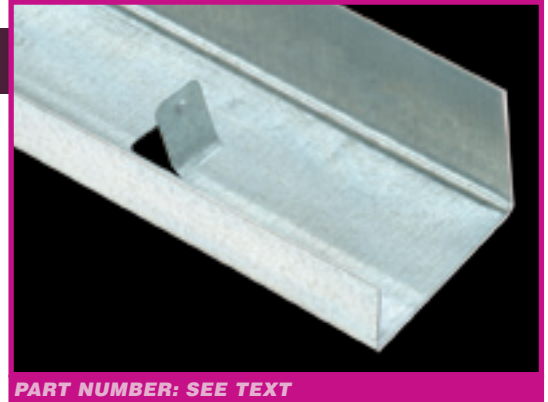


TABBED J-TRACK

Phillips Tabbed J-Track is used with common shaftwall studs at floor and ceiling cavity shaftwalls, vertical chases and area separation walls. The tabs retain a 1" shaftliner. J-Track is manufactured with galvanized steel. Phillips Tabbed J-Track is available with either a 2-1/4" or 3" leg. 2-1/4" leg is available in both 25 and 20 gauge steel and 3" leg is available in 20 gauge steel. Phillips provides widths of 2-1/2" (250J), 4" (400J) and 6" (600J) to suit all needs (6" available in 20 gauge only). Packaging depends on your chosen length, width, leg size and gauge; ask your sales representative for more information.



Drawing not to scale



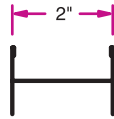
PART NUMBER: SEE TEXT



PART NUMBER: 2HH-25HDG

HEMMED H-STUD

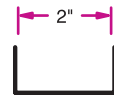
Phillips Hemmed H-Stud is a key framing component in area separation wall assemblies. This product features 2" wide vertical members which are inserted into the U-Track for framing solid partition separation walls. This product is manufactured to length for your convenience. Phillips Hemmed H-Stud follows nationally recognized evaluation service ICC ES, Inc. Legacy Report 90-26.01.



Drawing not to scale

U-TRACK

Phillips U-Track is used at the top and bottom of vertical panels to secure shaftliner panels and H-Studs in area separation wall assemblies. U-Track is fastened at the floor and ceiling to support the H-Studs. This product has a 2" width.



Drawing not to scale



PART NUMBER: 2U-25HDG



PART NUMBER: ASWCLIP

ASW CLIPS

Phillips ASW Clips are attached to the wood or steel framing at vertical steel framing stud/ wood framing intersections. ASW Clips are 2" wide with 2" x 2-1/2" legs. Packaging is 500 pieces per carton.

SIZES AND PACKAGING

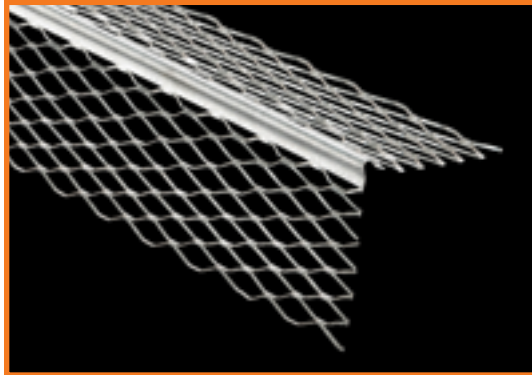
Hemmed H-Stud

Length	Pieces Per Bundle	Bundles Per Pallet	Feet Per Bundle
8'	10	55	80
10'	10	55	100
12'	10	55	120

U-Track

10'	10	54	100
-----	----	----	-----

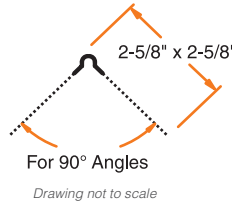
UPC labeling available upon request



PART NUMBER: 01ECB

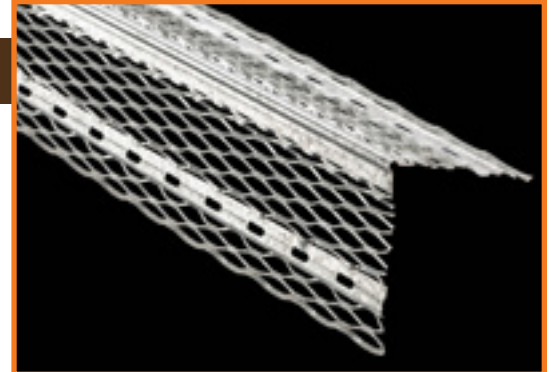
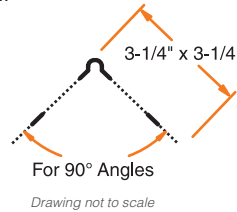
#1 EXPANDED CORNER BEAD

Phillips #1 Expanded Corner Bead is designed to provide strong corner reinforcement for conventional plaster applications. A solid metal nose provides a straight, rigid ground, and the 2-5/8" flanges can be easily flexed over irregular, uneven surfaces (3" special order, minimum quantities may apply). Easily install using standard industry practice. Plaster keys near solid nose provide reinforcement where needed most to ensure straight corners. Phillips offers this product in both galvanized steel (HDG) and zinc* (ZNC).

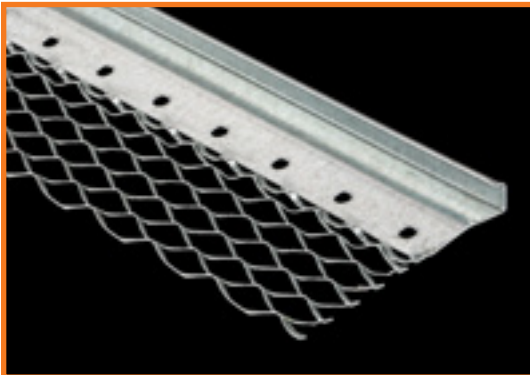


#33 WIDE EXPANDED FLANGE BEAD

Phillips #33 Wide Expanded Flange Bead provides additional rigidity and strength with its reinforced flanges. This product is for use on masonry, beams and column fireproofing. Combination of expanded flanges and pronounced bead nose ensures successful corner alignment and efficient plaster keying from edge to nose. Manufactured with full stiffening ribs to enhance durability. This product is produced with galvanized steel (HDG) and zinc* (ZNC).



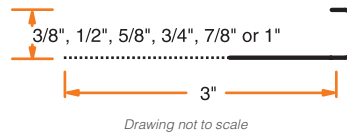
PART NUMBER: 33WFC



PART NUMBER: SEE TEXT

#66 EXPANDED FLANGE SQUARE CASING

Phillips #66 Expanded Flange Square Casing is designed as a universal plaster stop used at wall terminations, door and window openings and intersections. This product protects edges from damage and helps cover shrinkage cracks. The expanded flange grounds 3/8" (66EFC3), 1/2" (66EFC5), 5/8" (66EFC6), 3/4" (66EFC7), 7/8" (66EFC8) and 1" (66EFC1) (1-1/4" and 1-1/2" special order, minimum quantities may apply). Phillips offers #66 Expanded Flange Square Casing in both galvanized steel (HDG) or zinc* (ZNC). Also available with weep holes (66EFW).



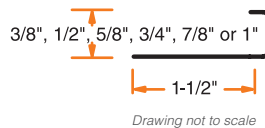
#66 SHORT FLANGE SQUARE CASING

Phillips #66 Short Flange Square Casing provides a short 90° angle return at plaster surface which serves as a plastering stop to ensure a neat finish. Phillips #66 Short Flange Square Casing's perforated flanges aid attachment and plaster keying. This product features short and solid flanges for those who prefer it. This product is available with 3/8" (JLB3), 1/2" (JLB5), 5/8" (JLB6), 3/4" (JLB7), 7/8" (JLB8) and 1" (66SFC1) grounds (1-1/4" and 1-1/2" special order, minimum quantities may apply). Available with either galvanized steel (HDG) or zinc* (ZNC). Also available with weep holes (JLW/66SFW).



PART NUMBER: SEE TEXT

*Zinc (ZNC) available special order, minimum quantities may apply.



SIZES AND PACKAGING

#66 Short & Expanded Flange (Standard Sizes)

Length	Pieces Per Carton	Cartons Per Pallet	Feet Per Carton
10'	30	40	300

UPC labeling available upon request

SIZES AND PACKAGING

#1 & #33

Length	Pieces Per Carton	Cartons Per Pallet	Feet Per Carton
8'	30	30	240
9'	30	30	270
10'	30	30	300
12'	30	30	360

UPC labeling available upon request

#40 EXPANSION JOINT

Phillips #40 Expansion Joint controls stresses in walls, ceilings, abutments, columns and partitions. Material will expand and contract from 1/4" to 5/8" openings. This two-piece versatile product works great with a variety of applications. Phillips offers this product in 1/2" (40ECJ5), 3/4" (40ECJ7) and 7/8" (40ECJ8) ground heights for your convenience with your choice of galvanized steel (HDG) or zinc* (ZNC).

*Zinc (ZNC) available special order, minimum quantities may apply.



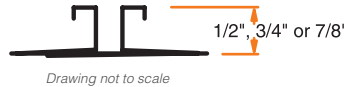
PART NUMBER: 40ECJ

SIZES AND PACKAGING

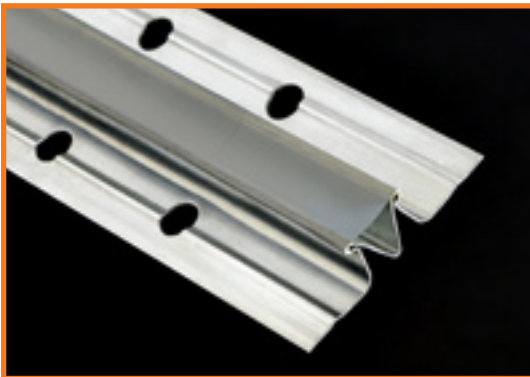
#40 (All Sizes)

Length	Pieces Per Carton	Cartons Per Pallet	Feet Per Carton
10'	15	25	150

UPC labeling available upon request



Drawing not to scale



PART NUMBER: SEE TEXT

#50 DOUBLE V EXPANSION CONTROL JOINT

The Phillips #50 zinc control joint resists corrosion on interior and exterior applications of plaster and stucco. It is used to relieve stresses of expansion and contraction during stucco curing and basic thermal changes, minimizing cracking. Clean up tape is provided for a neatly finished job.

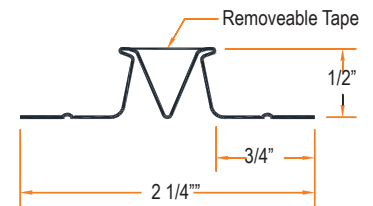
*Zinc (ZNC) available special order, minimum quantities may apply.

SIZES AND PACKAGING

#50 (All Sizes)

Length	Pieces Per Carton	Cartons Per Pallet	Feet Per Carton
10'	25	30	250

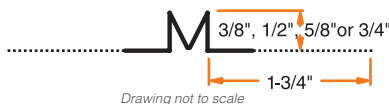
UPC labeling available upon request



Drawing not to scale

#15 DOUBLE V EXPANSION CONTROL JOINT

Phillips #15 Double V Expansion Joint relieves the stresses of expansion and contraction associated with natural shrinkage during stucco curing and basic thermal changes. Phillips #15 minimizes cracking in large plaster areas and provides ground to assure proper plaster or stucco thickness. Expanded flanges allow for quality keying. Phillips offers this product in 3/8" (15ECJ3), 1/2" (15ECJ5), 5/8" (15ECJ6) 3/4" (15ECJ7) and 7/8" (15ECJ8) (1/4" special order, minimum quantities may apply). Phillips #15 is available in either galvanized steel (HDG) or zinc* (ZNC).



Drawing not to scale



PART NUMBER: SEE TEXT

SIZES AND PACKAGING

#15 Double V (1/2", 3/8")

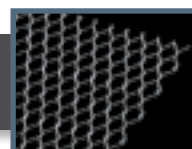
Length	Pieces Per Carton	Cartons Per Pallet	Feet Per Carton
10'	24	40	240

#15 Double V (5/8", 3/4" 7/8")

10'	24	30	240
-----	----	----	-----

UPC labeling available upon request

Phillips Metal Lath applications work great in stucco work. See page 46 for details.

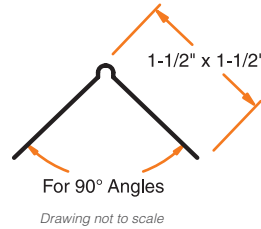


VENEER BEADS AND TRIMS



PART NUMBER: KALZRC

Phillips Kal-Korner® bead is formed of galvanized steel to protect exterior corners with veneer plastering. Install using standard industry practice. This product is an alternative to the mini veneer bead. Kal-Korner® is a proven durable performer and can also be used in interior plaster applications.



Kal-Korner® BEAD

SIZES AND PACKAGING

Kal-Korner® Bead

Length	Pieces Per Carton	Cartons Per Pallet	Feet Per Carton
8'	60 OR 80	28	640
9'	60	28	540
10'	60	28	600
12'	60	28	720

UPC labeling available upon request

MINI VENEER BEAD

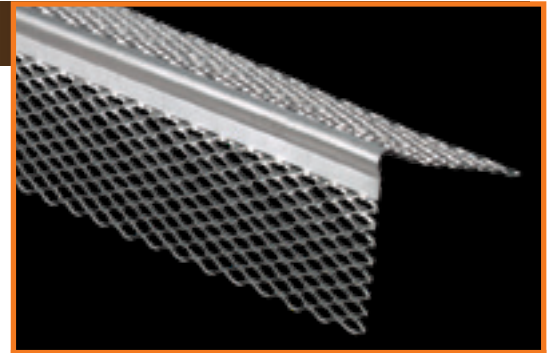
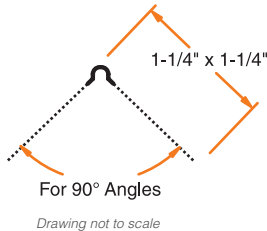
Phillips Mini Veneer Bead features fine mesh formed from hot-dipped galvanized steel to ensure clean, straight edges with veneer plastering. This product provides strong, durable finishes resistant to dents, gouges, abrasions and scuffs. Fully expanded flanges and rigid pronounced edges provide quality keying, superior bonding and eliminate shadowing. Install using standard industry practice.

SIZES AND PACKAGING

Mini Veneer Bead

Length	Pieces Per Carton	Cartons Per Pallet	Feet Per Carton
8'	60	25	480
10'	60	25	600

UPC labeling available upon request



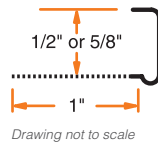
PART NUMBER: EVCHDG



PART NUMBER: SEE TEXT

J-TRIM CASING BEAD

Phillips veneer J-Trim Casing Bead finishes edges at door and window jambs by slipping over the edge of plaster base. This galvanized steel product features a mini-mesh flange for plaster keying. Phillips offers this galvanized steel product in both 1/2" (VJ5HDG) and 5/8" (VJ6HDG) to suit many needs.



SIZES AND PACKAGING

J-Trim (All Sizes)

Length	Pieces Per Carton	Carton Per Pallet	Feet Per Carton
10'	50	63	500

UPC labeling available upon request

L-TRIM CASING BEAD

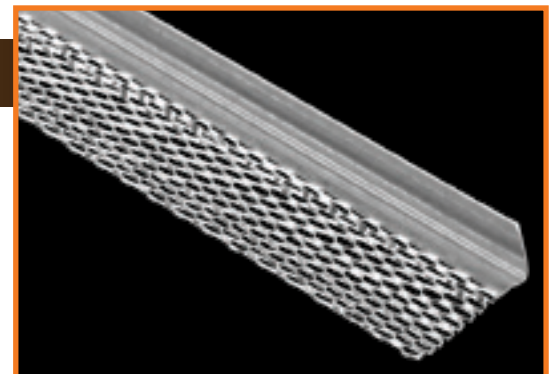
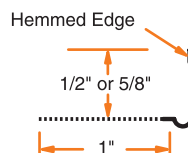
Phillips veneer L-Trim Casing Bead finishes edges at door and window jambs and features a hemmed edge for easy installation. This product features fully expanded mini-mesh for quality keying. Phillips offers this galvanized steel product in both 1/2" (VL5HDG) and 5/8" (VL6HDG) for your convenience.

SIZES AND PACKAGING

L-Trim (All Sizes)

Length	Pieces Per Carton	Cartons Per Pallet	Feet Per Carton
10'	50	60	500

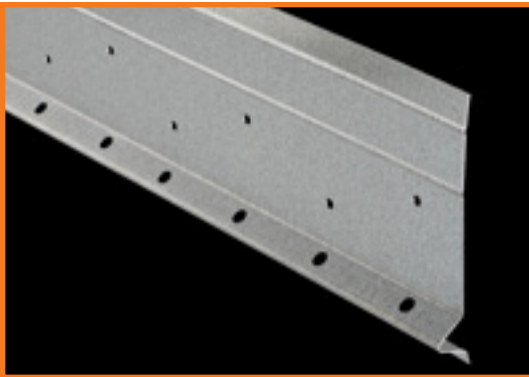
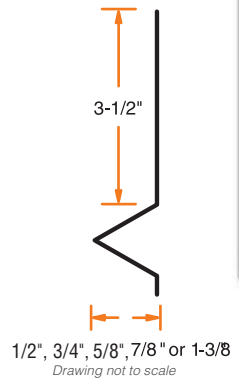
UPC labeling available upon request



PART NUMBER: SEE TEXT

#7 FOUNDATION WEEP SCREED

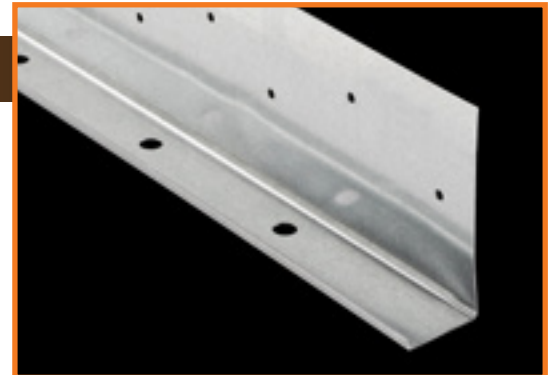
Phillips #7 Foundation Weep Screed provides a stucco stop and screed for wood and masonry in exterior stucco applications. This product features a 3-1/2" nailing flange which serves as a straight-edge stop at the sill plate line and flashing when water-resistant paper or paper backed lath is installed over the flange. Phillips #7 Foundation Weep Screed is punched with holes which enable keying as well as moisture weeping. This galvanized steel product is available in 1/2" (WS5HDG), 3/4" (WS7HDG), 5/8", 7/8" (WS8HDG) and 1-3/8" (WS13HDG) grounds. The 7/8" product is typically used with 7/8" three coat cement stucco systems while the 1-3/8" product is typically used with one inch foam on one coat plaster systems or in exterior insulation and finish systems.



PART NUMBER: SEE TEXT

J-WEEP

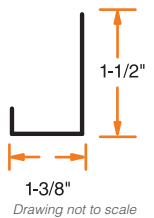
Phillips J-Weep is a versatile product used in several applications. J-Weep is commonly used as a casing bead or plaster stop in stucco applications. The punched weep holes allow for usage as a sill weep screed in exterior stucco applications. This product features a 3-1/2" nailing flange meeting applicable code requirements. Perforated flanges aid attachment and plaster keying. This galvanized steel product is available in 3/8" (JW3HDG), 1/2" (JW5HDG), 3/4" (JW7HDG), 7/8" (JW8HDG), and 1-3/8" (JW13HDG) grounds (3/4" special order, minimum quantities may apply).*



PART NUMBER: SEE TEXT

J-LOW BACK CASING

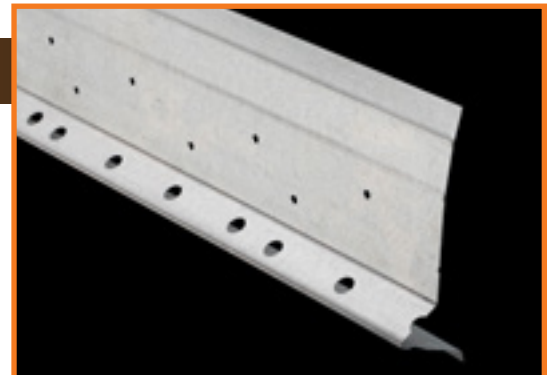
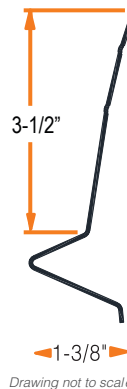
Phillips J-Low Back Casing is designed to be used as a plaster or casing stop bead with stucco at the top of doors and windows. J-Low Back Casing can be nailed, screwed or stapled to the frame or sheathing before installing metal lath over it. The extended ridge will provide a straight-edge stop for stucco. This galvanized steel product features a 1-1/2" nailing flange and is available in 1-3/8" ground. Available with weep holes upon request (JLW13HDG).



PART NUMBER: JLB13HDG

SHEAR SCREED

Shear screed is used like a regular foundation weep screed but covers the bottom edge of the sheathing in cases where shear walls are located. This helps to protect the edge of the sheathing from moisture and insect damage. Weep Screed is punched with holes which enable keying as well as moisture weeping. This product is made with galvanized steel.



PART NUMBER: SEE TEXT

SIZES AND PACKAGING

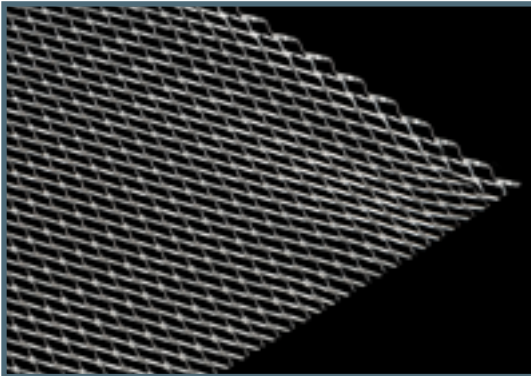
J-Weep & J-Low Back Casing

Length	Pieces Per Bundle	Bundles Per Pallet	Feet Per Bundle
10'	10	50	100

UPC labeling available upon request

*Packaging of special order grounds may vary.

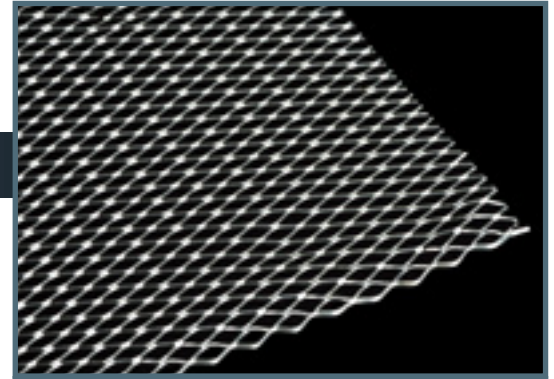
METAL LATH



PART NUMBER: SEE TEXT

FLAT DIAMOND MESH LATH

Phillips Flat Diamond Mesh Lath is used as a plaster base and reinforcement on almost all types of walls and ceilings, over wood or steel framing, flat or curved surfaces. The large number of openings provide for better stucco bonding in both pumped and troweled applications. This product is widely used as a reinforcement for base coat in ceramic tile work. This product is manufactured to specified weight with hot-dipped galvanized steel. Available in 1.75 (175GLHDG8), 2.5 (25GLHDG8) and 3.4 (34GLHDG8).



PART NUMBER: SEE TEXT

SELF-FURRING DIMPLED DIAMOND MESH LATH

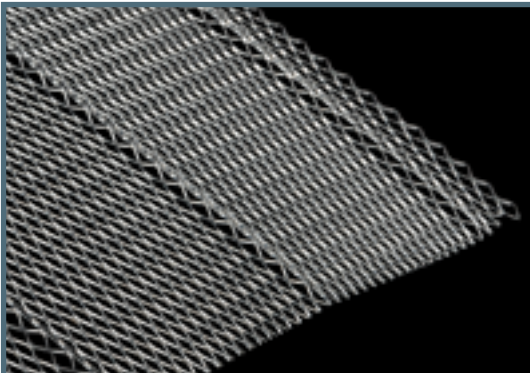
Phillips Self-Furring Dimpled Diamond Mesh Lath is used extensively in stucco work as plaster reinforcement over interior masonry walls as well as in steel column fireproofing. It is also widely used as a reinforcement for base coat in ceramic tile work. Self-Furring Diamond Mesh Lath is used over solid surfaces like concrete, cement board, column fireproofing, masonry and replastering over old surfaces. The self-furring dimples hold the metal lath 1/4" away from the surface to be plastered. The dimpled raised lath substrate provides superior mechanical bond over solid surfaces. This product is easily shaped for curved or contoured surfaces. The self-furring nature of the product helps applicators maintain plaster depths. This product features a hot-dipped galvanized finish. To maintain the designed furring characteristics, fasteners must be applied within the dimple cavity. Available in 1.75 (175SLHDG8), 2.5 (25SLHDG8) and 3.4 (34SLHDG8).

SIZES AND PACKAGING

Self-Furring & Flat Diamond Mesh Lath

Std Wt./ Sq. Yd.	Sheet Size	Pieces Per Bundle	Bundles Per Pallet	Sq. Yds. Per Bundle
1.75	27" x 97"	10	25	20
2.50	27" x 97"	10	25	20
3.40	27" x 97"	10	25	20

UPC labeling available upon request



PART NUMBER: SEE TEXT

SELF-FURRING V-GROOVE DIAMOND MESH LATH

Phillips Self-Furring V-Groove Diamond Mesh Lath is manufactured with approximately 1/4" deep grooves and 5 grooves per sheet to ensure thorough plaster penetration and strong mechanical bond. V-Groove Lath is easily shaped for curved or contoured surfaces like concrete, cement board, column fireproofing, masonry and replastering over old surfaces while maintaining consistent plaster depths and eliminating need for added furring strips. Available in 2.5 (25LHDG8VG) and 3.4 (34LHDG8VG) weight.

SIZES AND PACKAGING

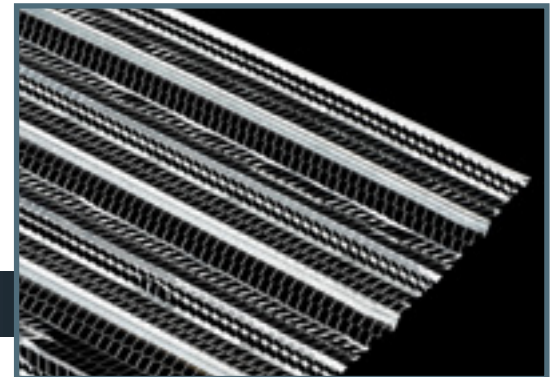
Self-Furring V-Groove Mesh Lath

Std Wt./ Sq. Yd.	Sheet Size	Pieces Per Bundle	Bundles Per Pallet	Sq. Yds. Per Bundle
2.50	27" x 97"	10	25	20
3.40	27" x 97"	10	25	20

UPC labeling available upon request

HIGH RIB LATH

Phillips High Rib Lath is ideal for horizontal applications with its seven, 3/8" deep, longitudinal V-shaped ribs running the length of the sheet at 4 1/2" intervals. Eight flat ribs provide additional rigidity. High Rib Lath is the most rigid of all laths and provides the added support required when framing more than 16" o.c. up to 24" o.c. The herringbone mesh pattern provides excellent bonding of the stucco to the lath for soffits and ceilings under steel or wood joist construction and metal-reinforced concrete floors. Available in 3.4 (34RLHDG8) weight.



PART NUMBER: SEE TEXT

SIZES AND PACKAGING

High Rib Lath

Std Wt./ Sq. Yd.	Sheet Size	Pieces Per Bundle	Bundles Per Pallet	Sq. Yds. Per Bundle
3.40	27" x 97"	10	50	20

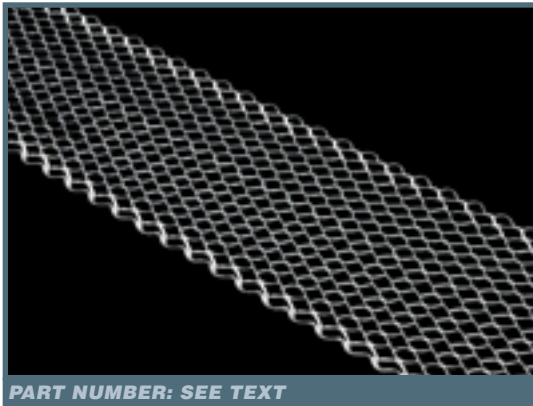
UPC labeling available upon request

PAPER BACK LATH

Asphalt saturated kraft building paper has been applied to the lath to control moisture, air flow and reduce air infiltration resulting in improved energy efficiency. Paper Back Lath is easy to install and ideal as a base for stone, ceramic tile and traditional stucco. The paper backing aids in plaster keying and stucco curing, protection of the sheathing during curing and forms the vertical surface behind the exterior wall cladding (stucco, brick, siding, etc.) that allows moisture to safely drain out of the wall system. The asphalt paper back breather sheet complies with Federal Specification UU-B-790A: Type 1, Grade D, Style 2 which is printed on the paper for easy identification. Paper Back is available with Flat Diamond Mesh Lath, Self-Furring Dimpled Diamond Mesh Lath and Self-Furring V-Groove Diamond Mesh Lath, Paper Backed Self Furring Diamond Mesh Lath and Paper Backed Flat Diamond Mesh Lath.



PART NUMBER: PB3



PART NUMBER: SEE TEXT

STRIP LATH

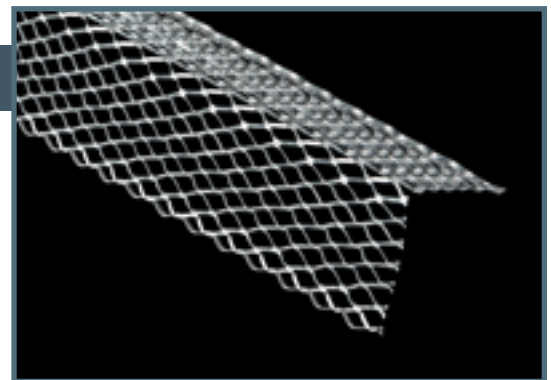
Phillips strip lath is a flat, expanded strip of metal lath strip used as plaster base and reinforcement in areas of solid bases and where uneven or dissimilar bases join. Typically attached diagonally at corners and windows, or other areas that are prone to cracking. This product is manufactured to specified weight with hot-dipped galvanized steel. Available in 6" (STL6HDG8) and 4" (STL4HDG8)

SIZES AND PACKAGING		
STRIP LATH		
Sheet Size	Pieces per Carton	Cartons per Pallet
4" x 97"	75	20
6" x 97"	75	20

UPC labeling available upon request

CORNERITE

Cornerite is designed for strengthening inside corners. This Phillips product is best for finishing inside corners prone to cracking thereby reducing call backs. Phillips Cornerite is run at 100° and locks in so it will form to the inside corner making a strong, straight, more durable corner. This product works great for reinforcing wall to ceiling corners and other inside corner areas on any stucco job noted for cracking. Available in 2"x2" (CR2HDG) and 3"x3" (CR3HDG)



PART NUMBER: SEE TEXT

SIZES AND PACKAGING		
CONERITE		
Sheet Size	Pieces per Carton	Cartons per Pallet
2" x 97"	75	20
3" x 97"	75	20

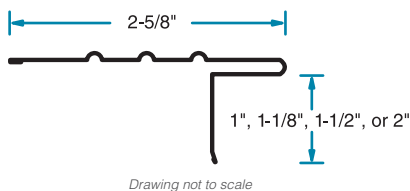
UPC labeling available upon request

ROOF EDGE METAL



STYLE D ROOF EDGE

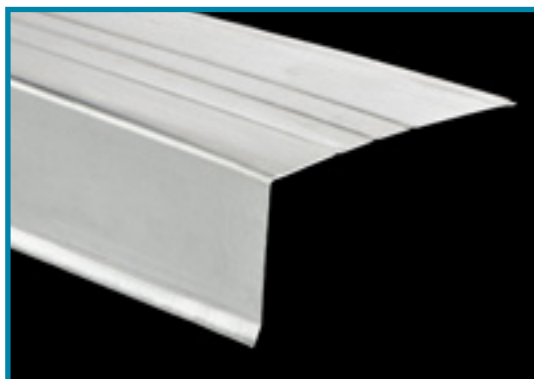
Phillips EDGEmaster® Style D Roof Edge is designed to protect and cover the exposed edge of the roof line. This product helps prevent water backup under the shingles and protects roofing from water damage along the entire eave. This product features hemmed edges for easy installation. Available in a variety of sizes and colors (see color guide). Packaging is 25 pieces per carton and 10' is standard length. Available in both 26 and 28 gauge.



Drawing not to scale



PART NUMBER: DREH

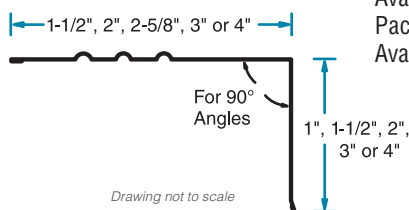


PART NUMBER: RE

ROOF EDGE

Phillips EDGEmaster® Roof Edge is designed to protect and cover the exposed edge of the roof line. This product helps prevent water backup under the shingles and protects roofing from water damage along the entire eave. Available in a variety of sizes; visit www.phillipsmfg.com for a listing of part numbers. This product features hemmed edges for easy and safer installation.

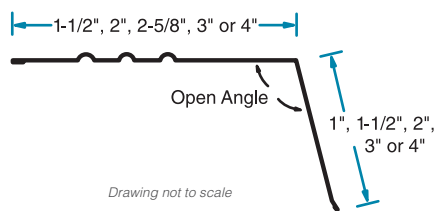
Available in a variety of sizes and colors (see color guide). Packaging is 25 pieces per carton and 10' is standard length. Available in both 26 and 28 gauge.



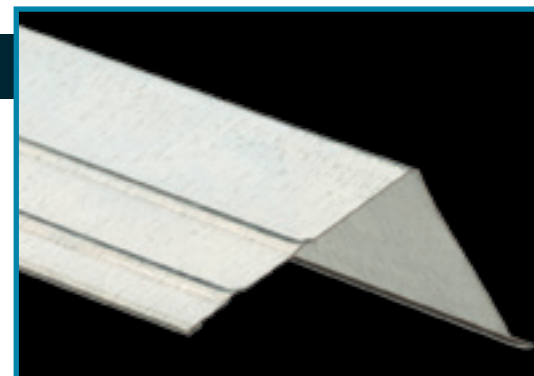
Drawing not to scale

GUTTER APRON (OPEN ANGLE)

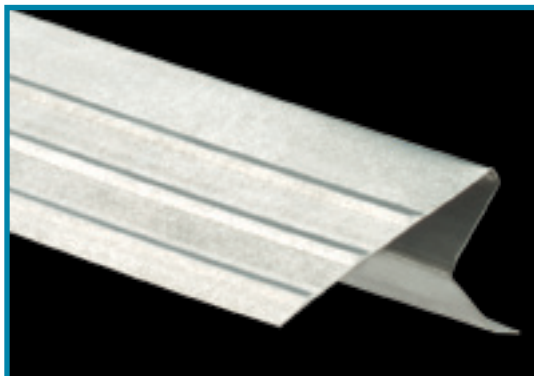
Phillips EDGEmaster® Gutter Apron (Open Angle) is used to direct water into the gutter system. This product is installed over the roof edge and extends into the gutter. Phillips Gutter Apron is open angle or designed for roof edge angles greater than 90 degrees. Available in a variety of sizes; visit www.phillipsmfg.com for a listing of part numbers. This product features hemmed edges for safe and easy installation. Available in a variety of sizes and colors (see color guide). Packaging is 25 pieces per carton and 10' is standard length. Available in both 26 and 28 gauge.



Drawing not to scale



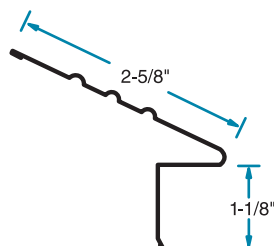
PART NUMBER: GA



PART NUMBER: 500ED

EAVE DRIP

Phillips EDGEmaster® Eave Drip is designed to direct water into the gutter system by directing rain water run-off to drip away from fascia. This product is installed over the roof edge and extends into the gutter. This product features hemmed edges for easy installation. Available in a variety of sizes and colors (see color guide). Packaging is 25 pieces per carton and 10' is standard length. Available in both 26 and 28 gauge.



Drawing not to scale

COLOR GUIDE



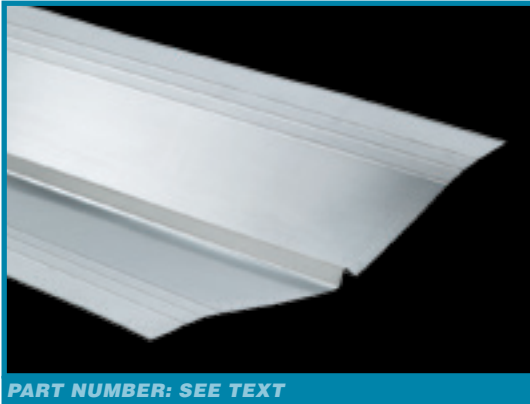
Actual colors may vary

ROLL FLASHING

Phillips EDGEmaster® Roll Flashing is used for custom flashing and do-it-yourself projects. This product adds a customized look to any dormer or flashing piece. Available in a variety of colors (see color guide). Up to 24" width available. Standard widths are 24" (RF2400), 20" (RF2000), 18" (RF1800), 16" (RF1600), 14" (RF1400), 12" (RF1200), 10" (RF1000), 8" (RF800), 6" (RF600) and 4" (RF400). 10', 25' and 50' length rolls available.



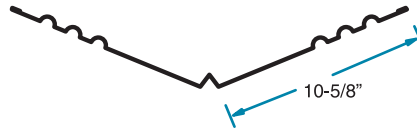
PART NUMBER: SEE TEXT



PART NUMBER: SEE TEXT

W-VALLEY

Phillips EDGEmaster® W-Valley is used in the roof valley area to channel water down into the gutters. This product features a small ridge in the middle to prevent run-off rain from running down the side of the roof and running under the shingles on the opposing side. This product is available in 24" width (WV24) as shown; standard width of 18" (WV18) and 20" (WV20) also available. Available in a variety of colors (see color guide). This product features hemmed edges for easy installation. Standard packaging is 100 pieces per pallet.

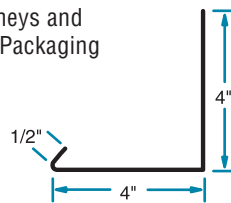


Drawing not to scale

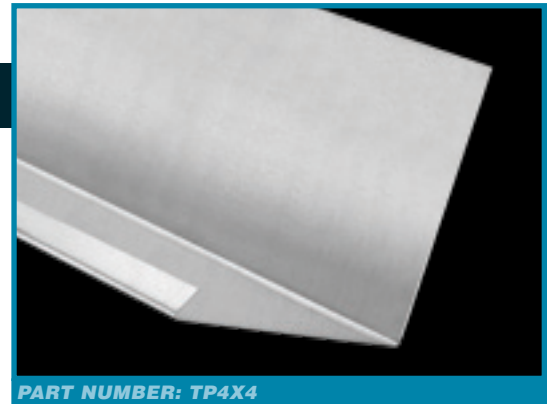
24" shown; other sizes available

TILE PAN (SIDEWALL FLASHING)

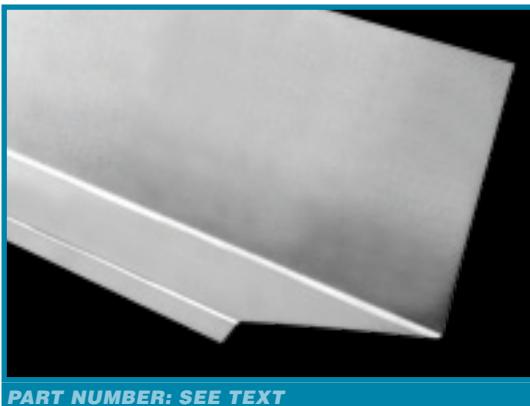
Phillips EDGEmaster® Tile Pan works great as flashing around chimneys and other applications. Available in a variety of colors (see color guide). Packaging is 10 pieces per bundle.



Drawing not to scale



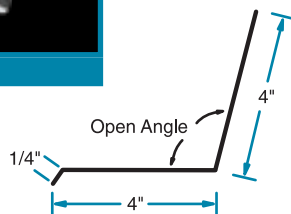
PART NUMBER: TP4X4



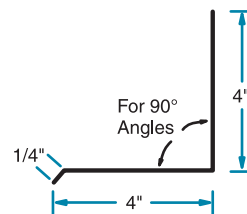
PART NUMBER: SEE TEXT

WALL (DORMER) FLASHING

Phillips EDGEmaster® Wall (Dormer) Flashing is designed to prevent the entry of water into the wall. Wall flashing is typically found at interruptions in the wall, such as windows and points of structural support. This product works great to prevent top edge of window or door openings from water infiltration. Wall (Dormer) Flashing is available in open angle (WF120) and regular for 90° angles (WF90). Available in a variety of sizes and colors (see color guide). Packaging is 10 pieces per bundle.



Drawing not to scale



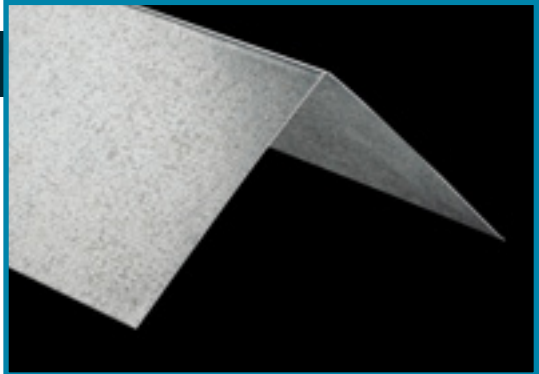
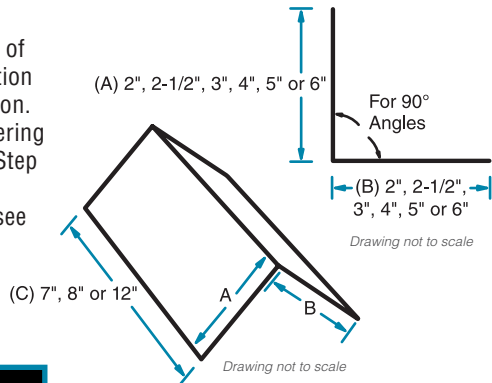
Drawing not to scale



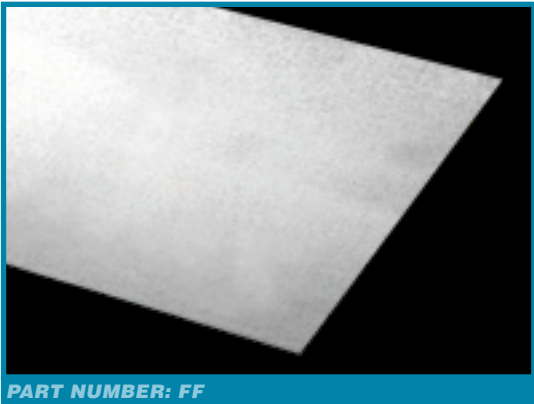


STEP FLASHING (PRE-BENT FLASHING SHINGLE)

Phillips EDGEmaster® Step Flashing (Pre-Bent Flashing Shingle) is used on the side of a shingle when it meets a vertical termination such as a wall, chimney or other termination. The product helps prevent water from entering between the shingle and the termination. Step Flashing is pre-bent for easy installation. Available in a variety of sizes and colors (see color guide). Packaging is 10 pieces per bundle and 100 per carton.



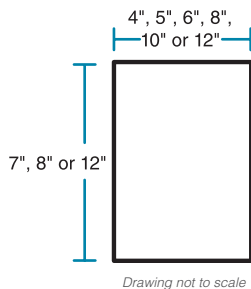
PART NUMBER: SF



PART NUMBER: FF

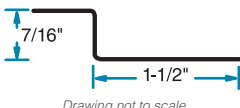
FLAT FLASHING SHINGLES

Phillips EDGEmaster® Flat Flashing Shingles are utility roofing metal products used in a variety of flashing applications. This product can be bent on the job to fit custom or fill in flashing requirements. Flat Flashing Shingles are available in a variety of sizes and colors (see color guide). Packaging is 10 pieces per bundle.

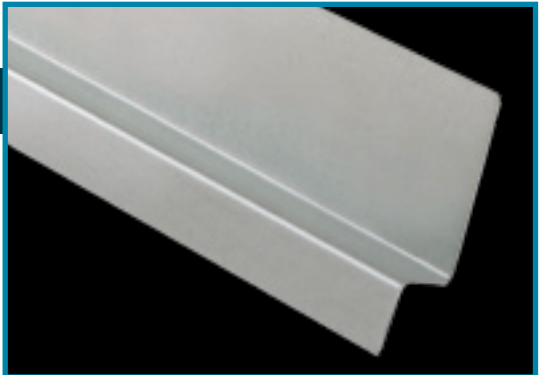


Z-FLASHING

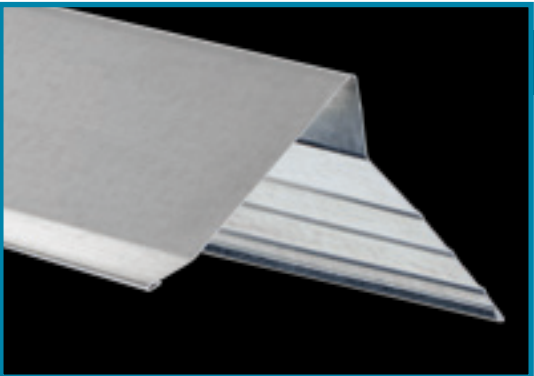
Phillips EDGEmaster® Z-Flashing is commonly used for preventing water penetration behind exterior siding and other residential applications. Available in a variety of colors (see color guide). Phillips offers this product in 7/16" and a variety of other sizes; ask your sales representative for details on sizes offered. Packaging is 10 pieces per bundle.



7/16" shown; other sizes available



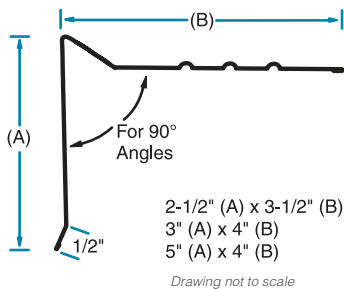
PART NUMBER: ZF



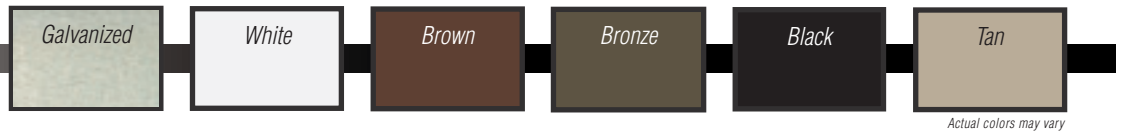
PART NUMBER: SEE TEXT

GRAVEL STOP

Phillips EDGEmaster® Gravel Stop is designed for commercial applications to seal the roof and prevent gravel and roof tar from washing over the roof line. It is manufactured in 10' lengths that provide fewer joints and seams with fewer pieces. This product is available in 2-1/2" x 3-1/2" (GS25X35), 3" x 4" (GS30X40) and 5" x 4" (GS50X40) and comes in a variety of colors (see color guide). Packaging is 10 pieces per bundle.

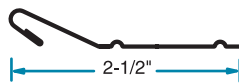


COLOR GUIDE



2-1/2" STARTER STRIP

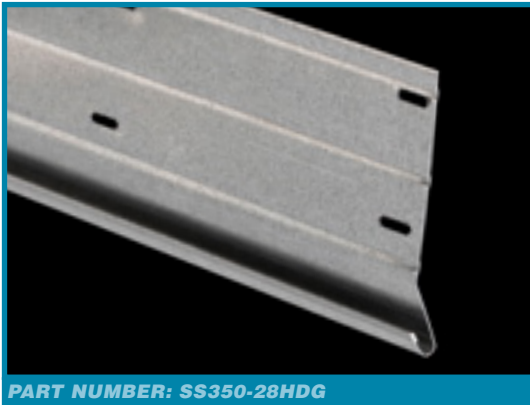
Phillips EDGEmaster® 2-1/2" starter strip product is used as a permanent siding part. Starter strip, as the name implies, is the first part installed when putting permanent siding onto a home. It is installed level and at the lowest point of the original sheathing. This gives the first row of siding something to hook on to. Starter strip is an extremely important part of a siding job. If the starter strip is not installed level to the eave, the siding will appear to go up or down hill. This product is only available in hot-dipped galvanized finish.



Drawing not to scale



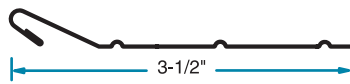
PART NUMBER: SS250-28HDG



PART NUMBER: SS350-28HDG

3-1/2" STARTER STRIP

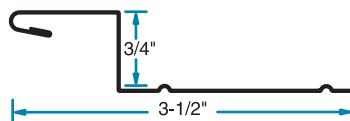
Phillips EDGEmaster® 3-1/2" starter strip product is used as a permanent siding part. Starter strip, as the name implies, is the first part installed when putting permanent siding onto a home. It is installed level and at the lowest point of the original sheathing. This gives the first row of siding something to hook on to. Starter strip is an extremely important part of a siding job. If the starter strip is not installed level to the eave, the siding will appear to go up or down hill. This product is only available in hot-dipped galvanized finish.



Drawing not to scale

3/4" OFFSET STARTER STRIP

Phillips EDGEmaster® 3/4" offset starter strip products is used as a permanent siding part. Starter strip, as the name implies, is the first part installed when putting permanent siding onto a home. It is installed level and at the lowest point of the original sheathing. This gives the first row of siding something to hook on to. The 3/4" offset is used when 3/4" insulation is installed after the starter strip. Starter strip is an extremely important part of a siding job. If the starter strip is not installed level to the eave, the siding will appear to go up or down hill. This product is only available in hot-dipped galvanized finish.



Drawing not to scale



PART NUMBER: SS750S-28HDG



**CORPORATE OFFICE & PLANT**

4949 S. 30th Street
Omaha, NE 68107

SACRAMENTO WAREHOUSE

1020 Striker Ave., STE 160
Sacramento, CA 95834

METRO ATLANTA WAREHOUSE

800 Cassville White Rd.
Cartersville, GA 30121

TAMPA PLANT

8419 Sabal Industrial Blvd.
Tampa, FL 33619

NILES PLANT

504 Walnut Street
Niles, OH 44446

CONTACT:

PHILLIPSMFG.COM
800.822.5055

PHOENIX WAREHOUSE

111 E. Maricopa Fwy.
Phoenix, AZ 85004

UMATILLA PLANT

38051 Florida 19
Umatilla, FL 32784

ASTM DESIGNATION FOR C1047

Standard Specification for Accessories Gypsum Wallboard and
Gypsum Veneer Base

Drywall Metal Beads and Trims

Corner Bead
Bullnose Corner Bead
J-400, L-200, U-200
kwikSTIK® Paper Faced Metal Beads and Trims*
gripSTIK® Vinyl Corner Beads and Trims
093 Expansion Control Joint

ASTM DESIGNATION FOR C1063 & C847**Conventional Plaster Accessories & Lath**

#1 Expanded Corner Bead
#15 Double V Expanded Joint
#30 Double V Corner Expansion Joint
#33 Wide Flange Expanded Bead
#40 Expansion Joint
#66 Expanded Flange Square Casing
#66 Short Flange Square Casing
Lath

Veneer Beads and Trims

Mini Veneer Bead
KaI-Korner®
J-Trim Casing Bead
L-Trim Casing Bead

*With exceptions as noted in product literature.

ASTM DESIGNATION FOR C645

Standard Specification for Nonstructural
Steel Framing Members

Channels

Cold Rolled Channel (16 Gauge)
Standard Duty Resilient Channel (RC-1)
Tru-25® Gauge Resilient Channel (RC-1)
Weath-Ex® Tru-25® Gauge Resilient Channel (RC-1)
2 Legged Expanded Resilient Channel (RC-2)
Z-Furring Channel

Metal Angle

Knurled Angle Runner 90°

Metal Flat Stock

Knurled Cabinet Backing (Flat Strap)

Studs and Tracks

25 and 20 Gauge Studs and Tracks
H-Studs and U-Tracks
J-Tracks

ASTM DESIGNATION FOR A653

Standard Specification for Steel Sheet, Zinc-Coated (Galvanized) or Zinc-Iron Alloy Coated (Galvannealed) by the Hot-Dip Process

Coatings

Galvannealed
Hot-Dip Galvanized



» LEED® Certification

Phillips Manufacturing Co. understands the importance of recycling and manufactures all of its products utilizing materials with recycled content. Phillips Manufacturing's products contain a minimum of **30% total recycled content** (25% post-consumer and 5% pre-consumer). Using Phillips products can contribute to several LEED® points under the Materials and Resources category.

Leed v4 for building and Design Construction

- » **MR Credit: Construction and Demolition Waste Management.**
- » **MR Credit: Building Product Disclosure and Optimization Sourcing of Raw Materials, Option2.**
- » **MR Credit: Building Product Disclosure and Optimization Environmental Product Declaration, Options 1 & 2.**
- » **MR Credit: Building Product Disclosure and Optimization Material Ingredients, Option 1.**
- » **MR Credit: Building Life-Cycle Impact Reduction, Option 4**

To request a project specific LEED® letter, please visit our website at PHILLIPSmfg.com

» Additional Information Available at:

www.PHILLIPSmfg.com

Phillips is dedicated to providing you the most up to date information on our website including:

- » PDF Product Catalog
- » Product Submittals
- » Press Releases
- » Interactive Digital Catalog
- » Installation Recommendations
- » Sound Transmission Control
- » Packaging Sheets
- » LEED® Form
- Upon Request
- » Assembly Drawings
- » SDS Sheets

» **Connect With Phillips:**    

#1 Expanded Corner Bead.....	34
#7 Foundation Weep Screed.....	37
#15 Double V Expansion Joint.....	35
#33 Wide Expanded Flange Bead.....	34
#40 Expansion Joint.....	35
#50 Double Expansion Joint.....	35
#66 Expanded Flange Square Casing.....	34
#66 Short Flange Square Casing.....	34
093 Expansion Joint.....	11
180FLEXKorner™.....	16
2-Way Corner Cap.....	18
2-Way Splay Corner Cap.....	18
3-Way Corner Cap.....	17
3-Way Splay Corner Cap.....	17

- A -

Adjustable Inside Corner.....	16
Angle Flashing.....	40-42
Archway Corner Bead (Arch Bead) & Trim.....	12, 14, 19

- B -

Bullnose Corner Bead	
Metal.....	8-10
Paper Faced.....	23-27
Vinyl.....	13-15
Bullnose Corner & Transition Caps.....	17-18
Bullnose J-Round.....	10

- C -

Casing Bead.....	34, 36
Channels.....	29-31
Clips.....	33
Cold Rolled Channels.....	31
Control Joints.....	11, 16, 35
Corner Beads	
Metal.....	6-10
Paper Faced.....	21-26
Stucco.....	34
Veneer.....	36
Vinyl.....	12-15
Customer Service and Care.....	2-4

- D -

Diamond Mesh Lath.....	38
Double V Expansion Joint #15.....	35
Drywall Furring Channel.....	30

- E -

Eave Drip.....	40
EDGEmaster® Roofing Metals.....	40-43
Everlast® Corner Bead.....	6
Expanded Corner Bead #1.....	34
Expanded Flange Square Casing #66.....	34
Expansion Joint #15.....	35
Expansion Joint #40.....	35
Expansion Joint 093.....	11
Extra Wide Vinyl Corner Bead.....	12
E-Z Strip® Expansion Control Joint (Vinyl).....	16

- F -

Fire Rated Assemblies.....	33
First Choice Metal Corner Bead.....	6-7
Flashing.....	40-43
Flat Diamond Mesh Lath.....	38
Flat Flashing Shingles.....	42
Flat L-Tear Strip.....	20
Flat Strap.....	32
Foundation Weep Screed.....	37
Furring Channels.....	30

- G -

gripSTIK® Vinyl Products.....	12-20
Gravel Stop.....	42
Gutter Apron (Open Angle).....	40

- H -

H-Stud.....	33
Hat Channel.....	30
Hemmed Furring Channel.....	30
Hemmed H-Stud.....	33
High Rib Lath.....	38
Hot-Dipped Galvanized Corner Bead.....	6-10

- I -

Inside Corner Adjustable.....	16
Inside Corner Bead	
Paper Faced.....	26
Vinyl.....	16
Interior Framing.....	29-31

- J -

J-Low Back Casing.....	37
J-Round.....	10
J-Track.....	33
J-Trim.....	11, 19
J-Weep.....	37

- K -

Kal-Korner® Bead.....	36
Kerfed Bullnose	
Metal.....	10
Vinyl.....	15
klinchSTIK® Metal Corner Bead.....	6-9
Knurled Angle Runner (Utility Angle).....	31
kwikSTIK® Paper Faced Products.....	22-28

- L -

L-Tear Strip.....	20
L-Trim	
Metal.....	11
Paper Faced.....	27-28
Veneer.....	36
Vinyl.....	19
Lath.....	38-39
LEED® Certification.....	5

- M -

Masonry Screed	37
MAX-Flex® Archway	12, 14, 19
Mesh Lath	38
Metal Angle Runner	31
Metal Beads & Trims	6-11
Metal Corner Beads	6-10
Metal Framing	29-31
Metal Lath	38-39
Metal Studs	33
Metal Track	33
Metal Trims	11
Mini Bullnose	13
Mini Veneer Bead	36
Mud Hopper	28
Mudable Trims	11
Multipurpose Web-based spray adhesive	20

- N -

Nail-On Paper Faced Beads	25-26
---------------------------------	-------

- O -

Open Angle Splay Corner Bead	
Metal	7, 9
Paper Faced	24-27
Vinyl	12, 14

- P -

Pan Flashing	41
Paper Back Lath	39
Paper Faced Metal Corner Beads	21-28
Paper Faced Metal Products	21-28
Paper Faced Metal Trims	27-28
Phillips Advantage	3
Plant Locations	3, 44
Plaster Beads & Trims	36
Plaster Casing Beads	36
Plaster Control Joints	11, 16
Plaster Corner Beads	34, 36
Pre-Bent Flashing	42

- R -

RC-1 and RC-2	29
RC-XL	29
Resilient Sound Channel	29
Roll Flashing	41
Roof Edge	40
Roofing Metals	40-43

- S -

Self-Furring Dimpled Diamond Mesh Lath	38
Self-Furring V-Groove Diamond Mesh Lath	38
ShadowFree® Metal Products	6-9
Short Flange Square Casing #66	34
Siding Accessories	43
Splayed Corner Bead	
Metal	7, 9
Paper Faced	24-27
Vinyl	12, 14
Web-based spray adhesive	20
Starter Strips	43
Step Flashing	42
Stucco Casing Beads	34

Stucco Control Joint	35
Strap	32
Style D Roof Edge	40

- T -

Tabbed J-Track	33
Tape-On Paper Faced Beads	21-24
Tape-On Paper Faced Trims	27-28
Tile Pan (Sidewall Flashing)	41
Tracks	31, 33
Transition Caps	18
Trim Products	
Metal	11
Paper Faced Metal	27
Vinyl	19

- U -

U-Channel	31, 33
U-Track	33
U-Trim	11
Uneven Leg Paper Bead	22
Utility Angle	31

- V -

V-Groove Diamond Mesh Lath	38
Veneer	36
Veneer Beads & Trims	36
Veneer Casing Beads	36
Veneer Corner Beads	36
Vinyl	12-20
Vinyl Adaptors	17, 18
Vinyl Beads & Trims	12-20
Vinyl Finishing Products	19-20

- W -

Wall (Dormer) Flashing	41
W-Valley	41
Weep Screed	37
Weep Hole Casing Bead	34
Wide Expanded Flange Bead #33	34
Wide Hat Channel	30

- Z -

Z-Flashing	42
Z-Furring Channel	31
Zinc Control Joints	11, 35
Zinc Veneer and Stucco Products	34-37



Corporate Office & Plant:
Omaha, NE

Office & Manufacturing Plant:
Niles, OH

Manufacturing Plant:
Tampa, FL

Manufacturing Plant:
Umatilla, FL

Office & Distribution Warehouse:
Phoenix, AZ

Office & Distribution Warehouse:
Sacramento, CA

Distribution Warehouse
Metro Atlanta, GA

PHILLIPSMFG.COM
800.822.5055

Printed in USA.

Copyright © 2014 Phillips Manufacturing Co.
All rights reserved.

REG03/23